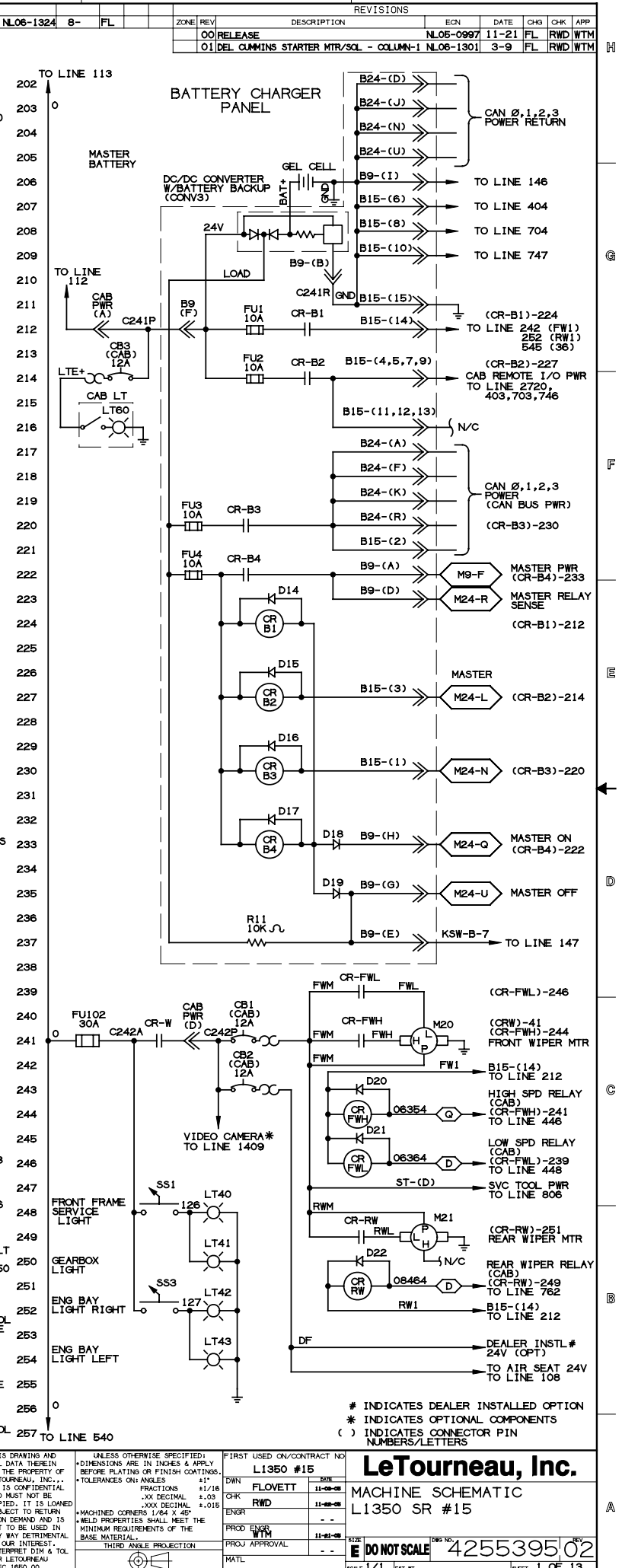
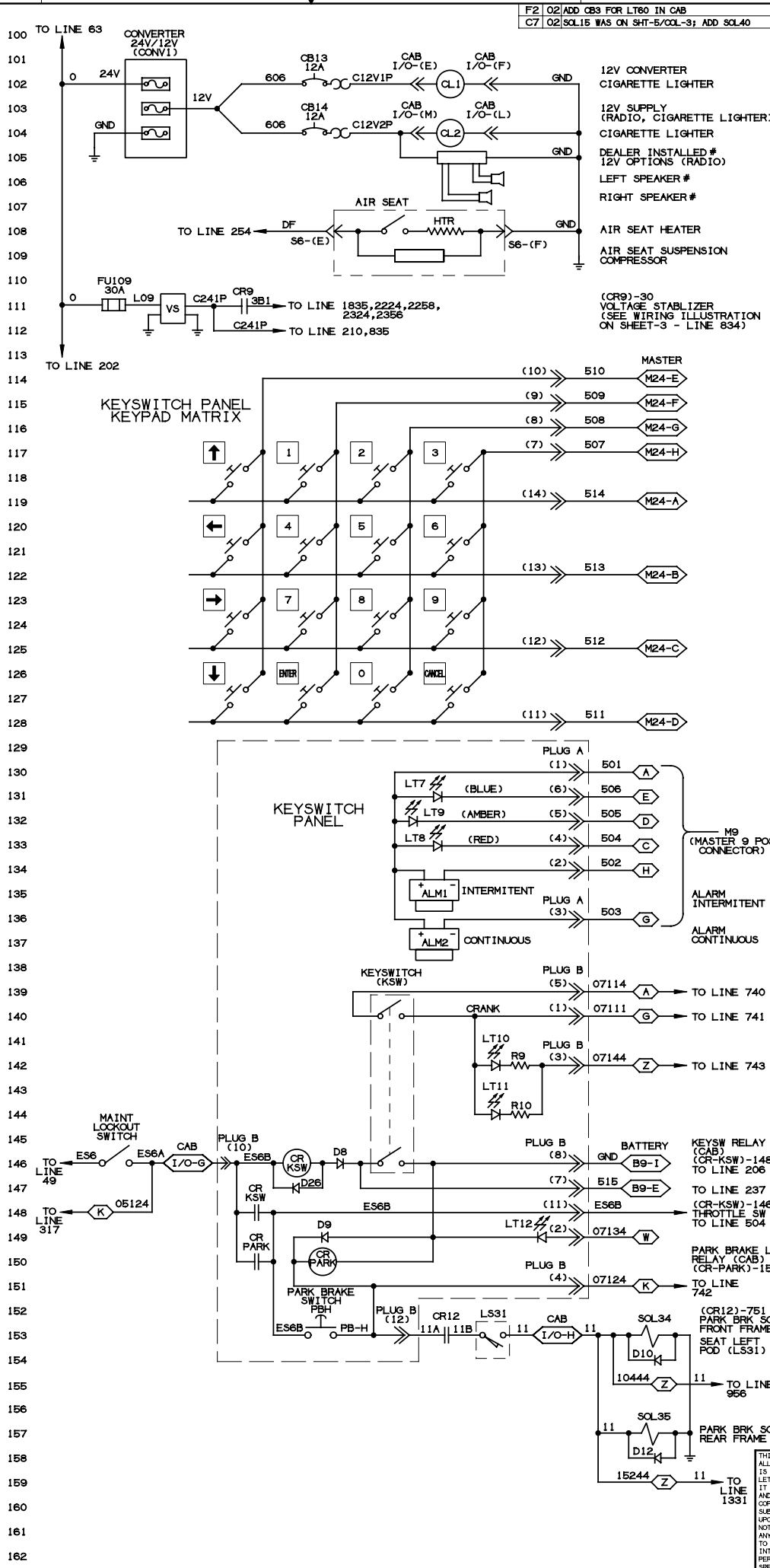
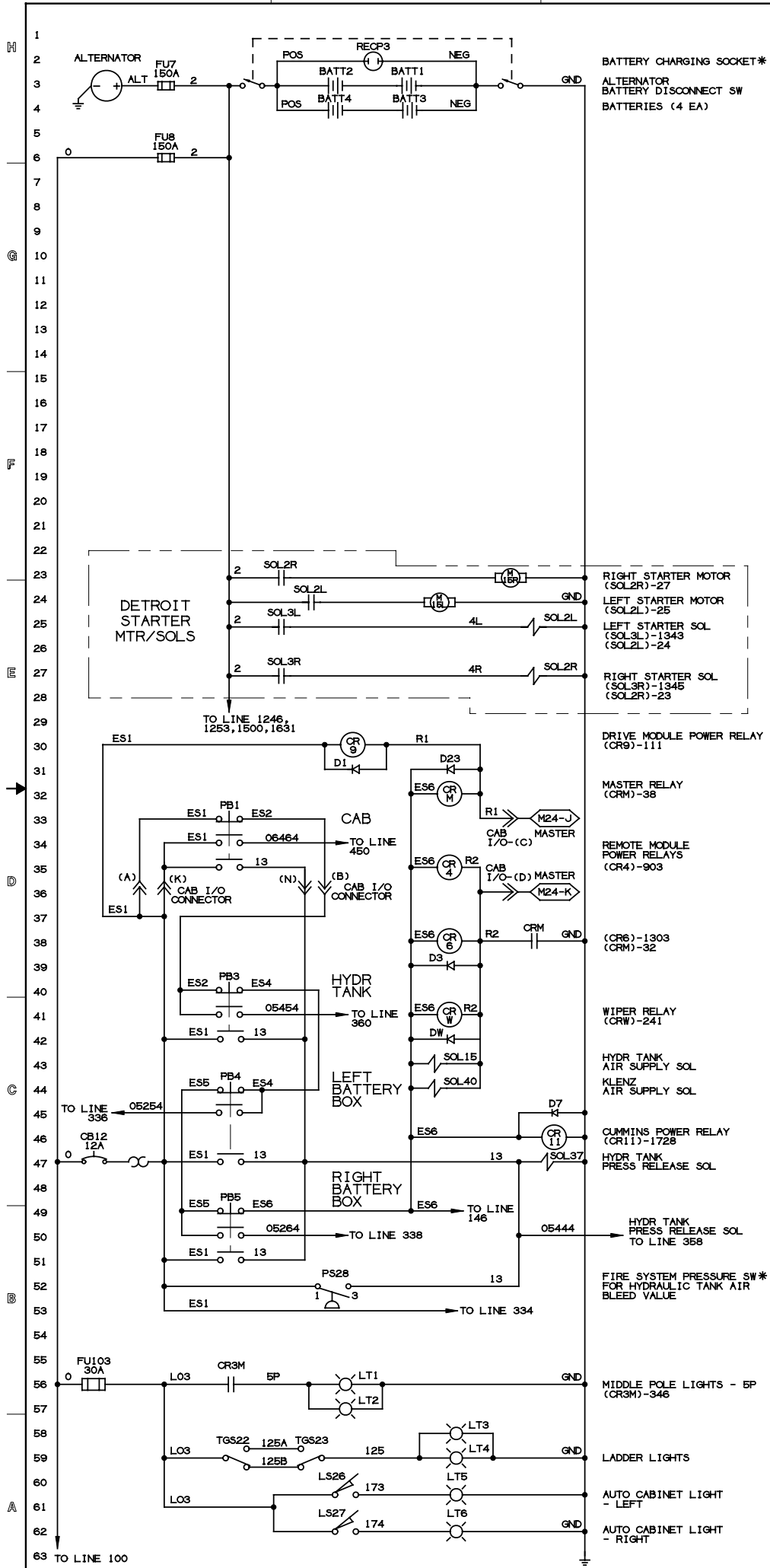


ZONE	REV	DESCRIPTION	ECN	DATE	CHK	APP
	00	RELEASE	NL05-0997	11-21	FL	RWD/WTM
	01	DEL. CUMMINS STARTER MTR/SOL - COLUMN-1	NL06-1301	3-9	FL	RWD/WTM



THIS DRAWING AND ALL DATA THEREIN IS THE PROPERTY OF LETOURNEAU, INC. IT IS CONFIDENTIAL AND MUST NOT BE COPIED, REPRODUCED, OR TRANSMITTED IN ANY MANNER WITHOUT THE WRITTEN PERMISSION OF LETOURNEAU, INC. UNLESS OTHERWISE SPECIFIED, DIMENSIONS ARE IN INCHES & APPLY BEFORE PLATING OR FINISH COATINGS. TOLERANCES ON ANGLES: 1/16" FRACTIONS ±.015, .XX DECIMAL ±.010, .XXX DECIMAL ±.005. MACHINED CORNERS: 1/64" X 45°. WELD PROPERTIES SHALL MEET THE MINIMUM REQUIREMENTS OF THE BASE MATERIAL. THIRD ANGLE PROJECTION.

UNLESS OTHERWISE SPECIFIED: DIMENSIONS ARE IN INCHES & APPLY BEFORE PLATING OR FINISH COATINGS. TOLERANCES ON ANGLES: 1/16" FRACTIONS ±.015, .XX DECIMAL ±.010, .XXX DECIMAL ±.005. MACHINED CORNERS: 1/64" X 45°. WELD PROPERTIES SHALL MEET THE MINIMUM REQUIREMENTS OF THE BASE MATERIAL. THIRD ANGLE PROJECTION.

FIRST USED ON/CONTRACT NO. L1350 #15

DWN	FLOVETT	DATE	11-20-00
CHK	RWD	DATE	11-20-00
ENGR	WTM	DATE	11-20-00
PROD ENGR	WTM	DATE	11-20-00
PROJ APPROVAL		DATE	
MATL		DATE	

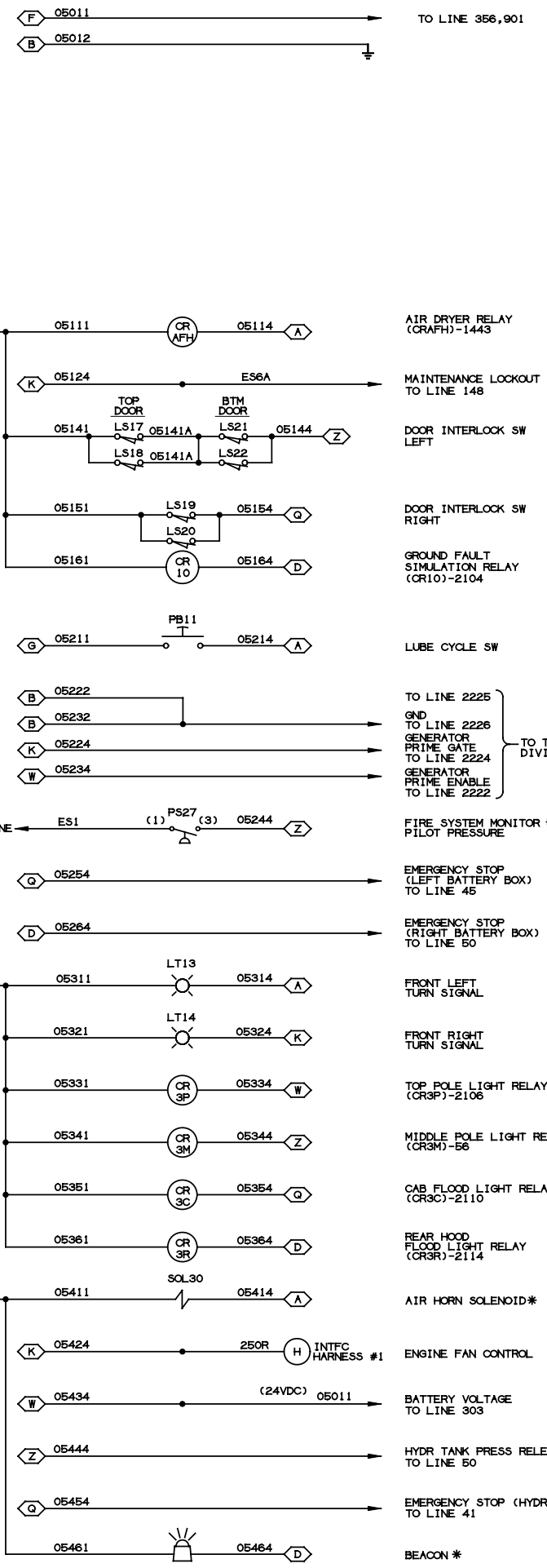
**LeTourneau, Inc.**  
MACHINE SCHEMATIC  
L1350 SR #15

DO NOT SCALE 425539502

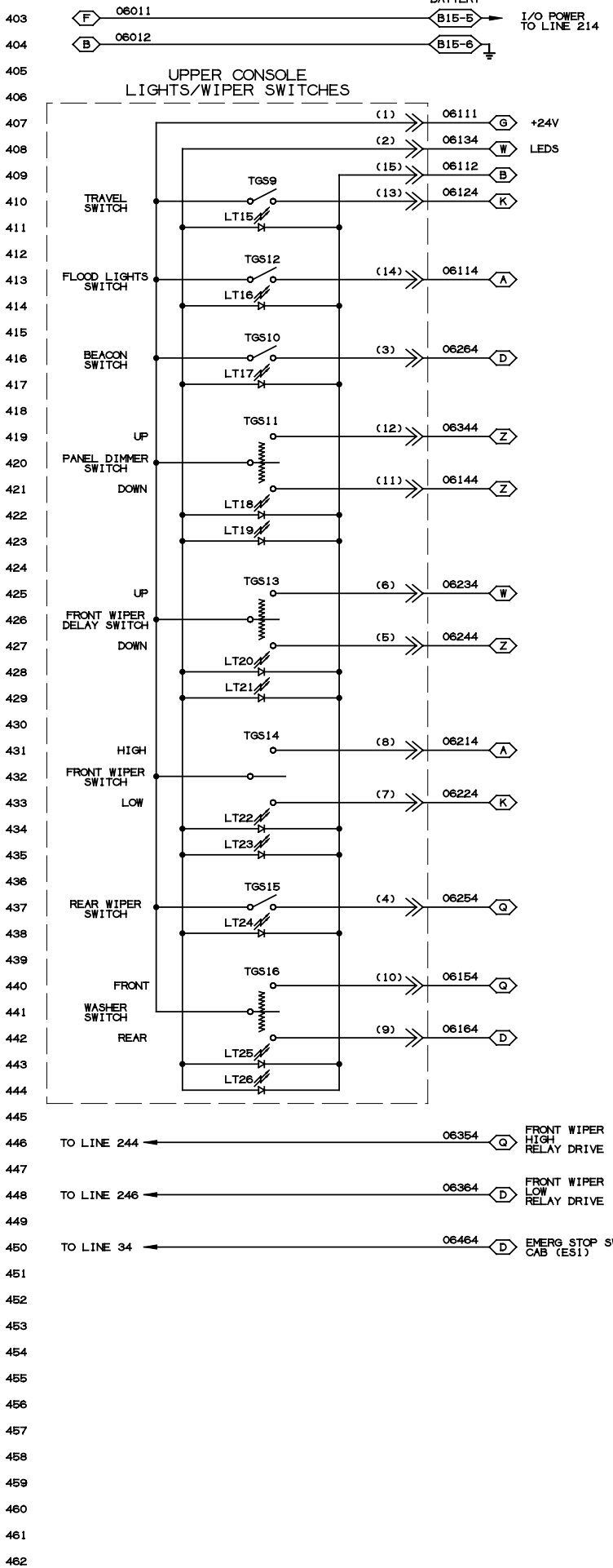
SHEET 1 OF 13

REVOLUTIONS		ECN	DATE	CHK	APP
00	RELEASE	NL05-0997	11-21	FL	RWD WTM
01	AC SYSTEM WAS SIGMA	NL06-1301	3-9	FL	RWD WTM
02	NO CHANGE THIS SHEET	NL06-1324	8-	FL	

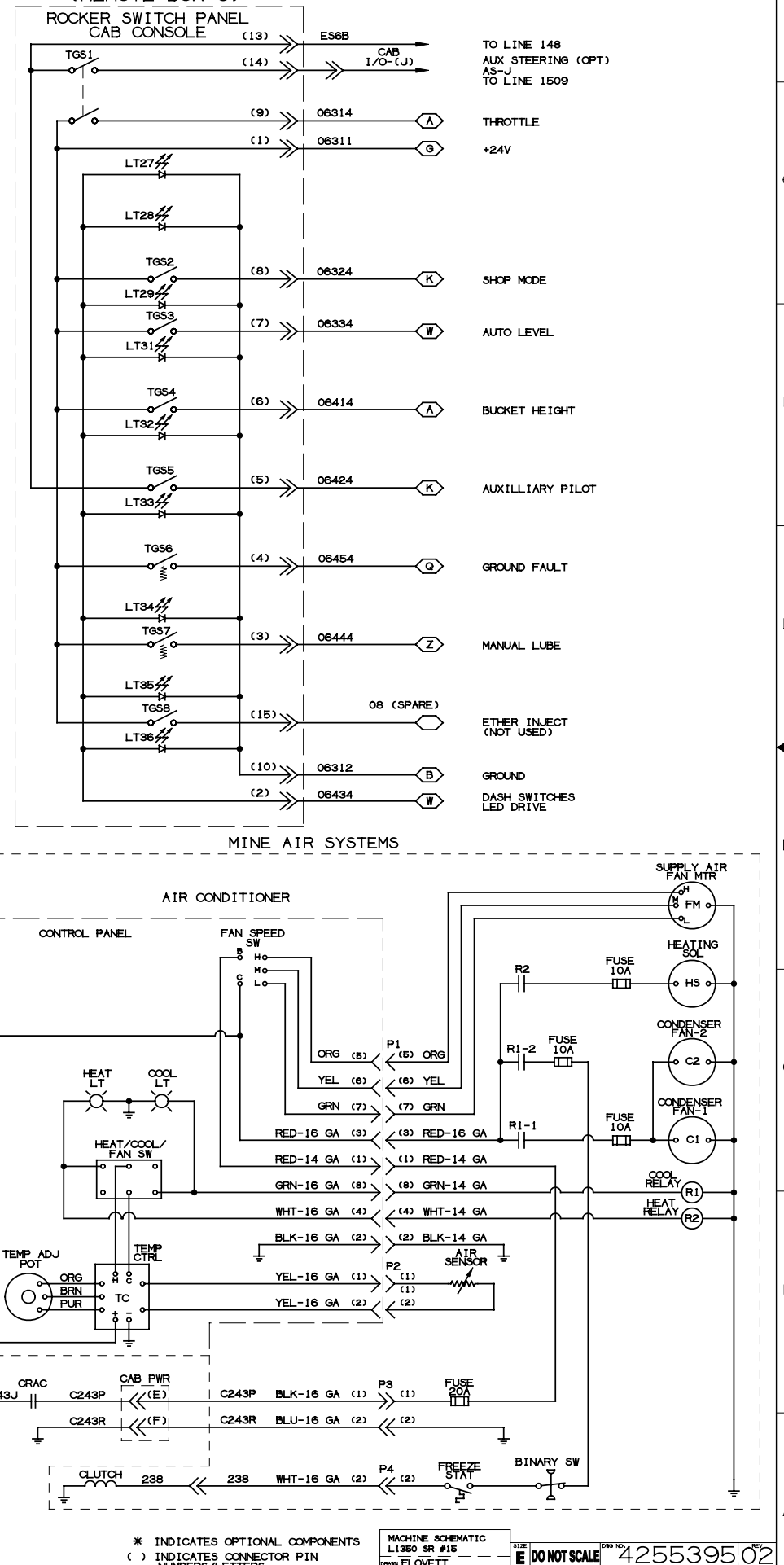
LEFT LADDER BOX  
(REMOTE BOX 5)



CAB MODULE #1  
(REMOTE BOX 6)



CAB MODULE #1  
(REMOTE BOX 6)



\* INDICATES OPTIONAL COMPONENTS  
( ) INDICATES CONNECTOR PIN NUMBERS/LETTERS

MACHINE SCHEMATIC  
L1360 SR #15  
DRAWN FLOVETT  
ISSUED 11-08-08

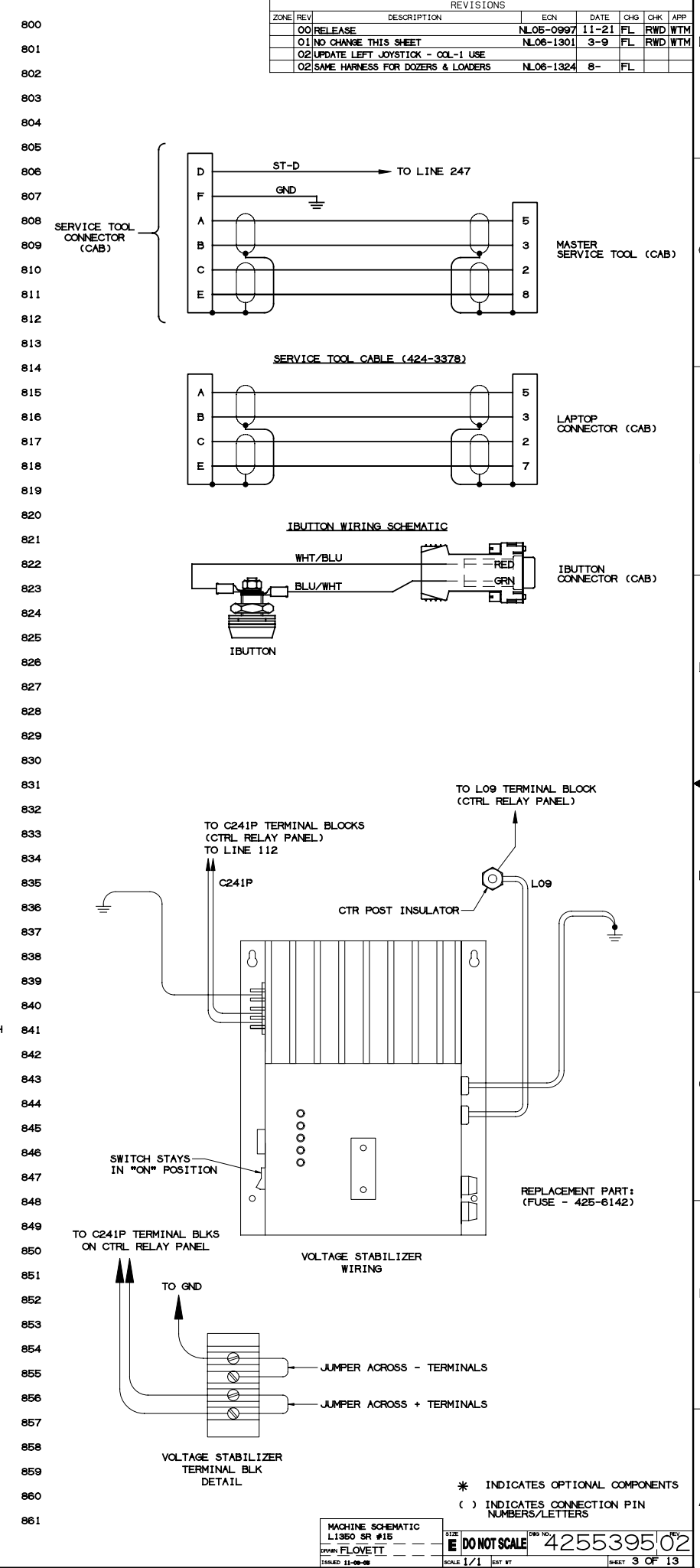
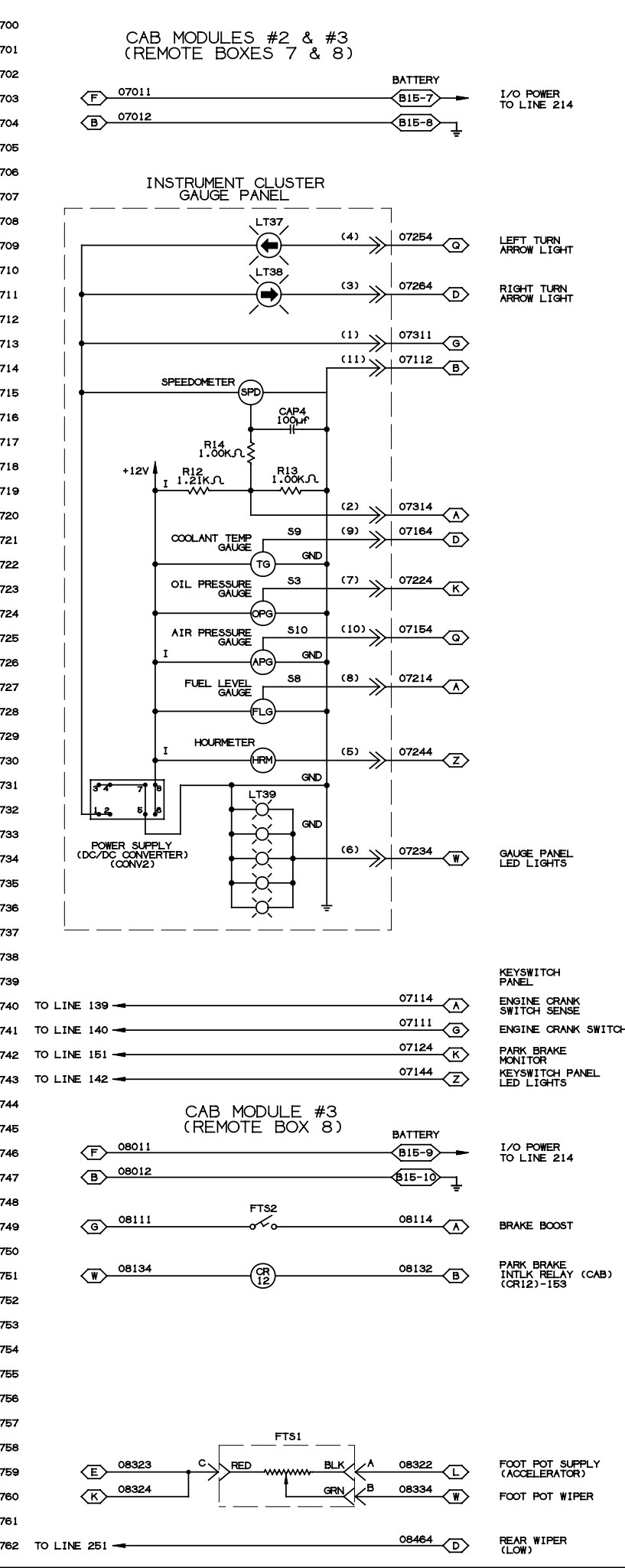
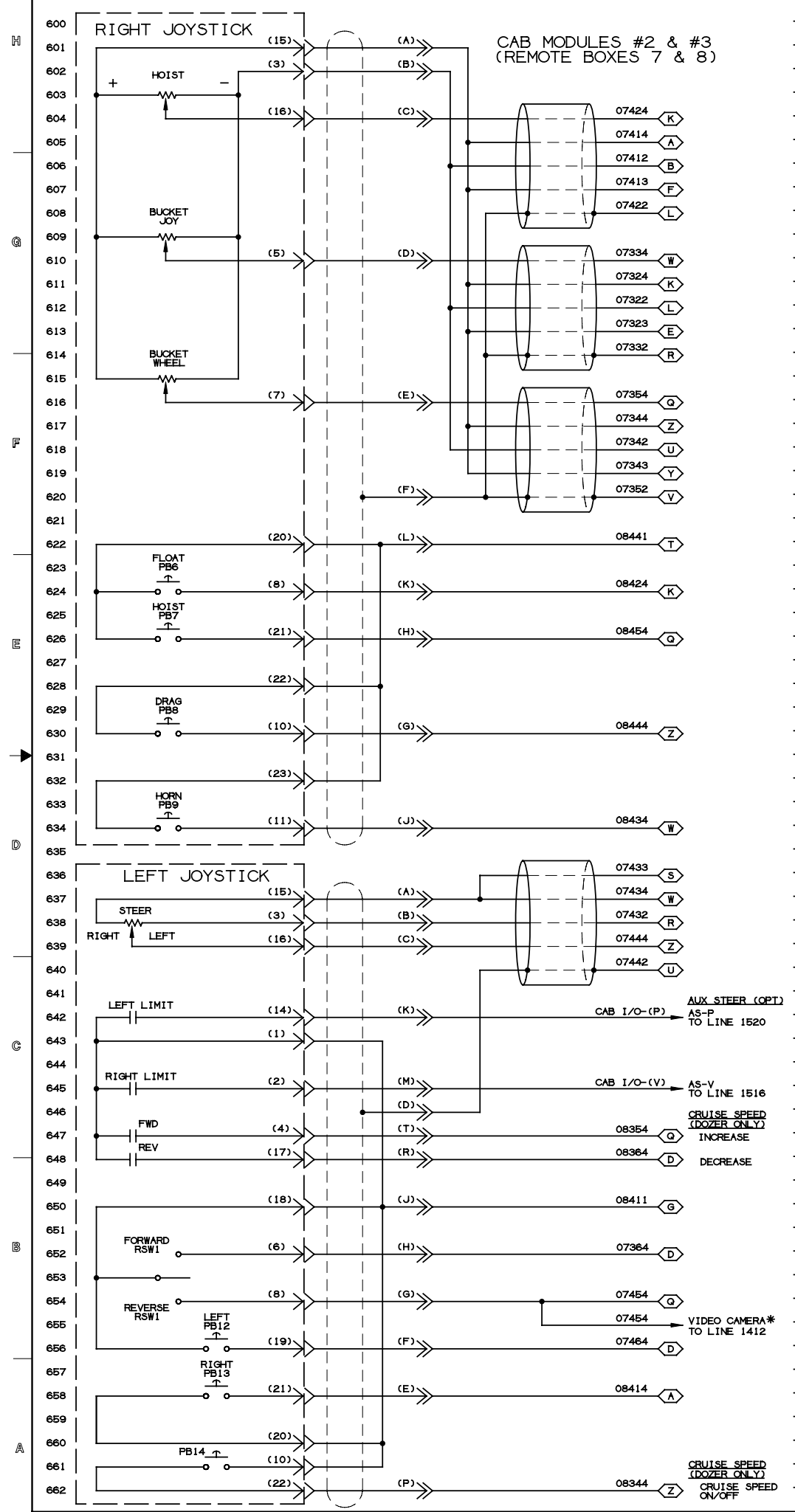
SCALE 1/1

DO NOT SCALE

4255395102

SHEET 2 OF 13

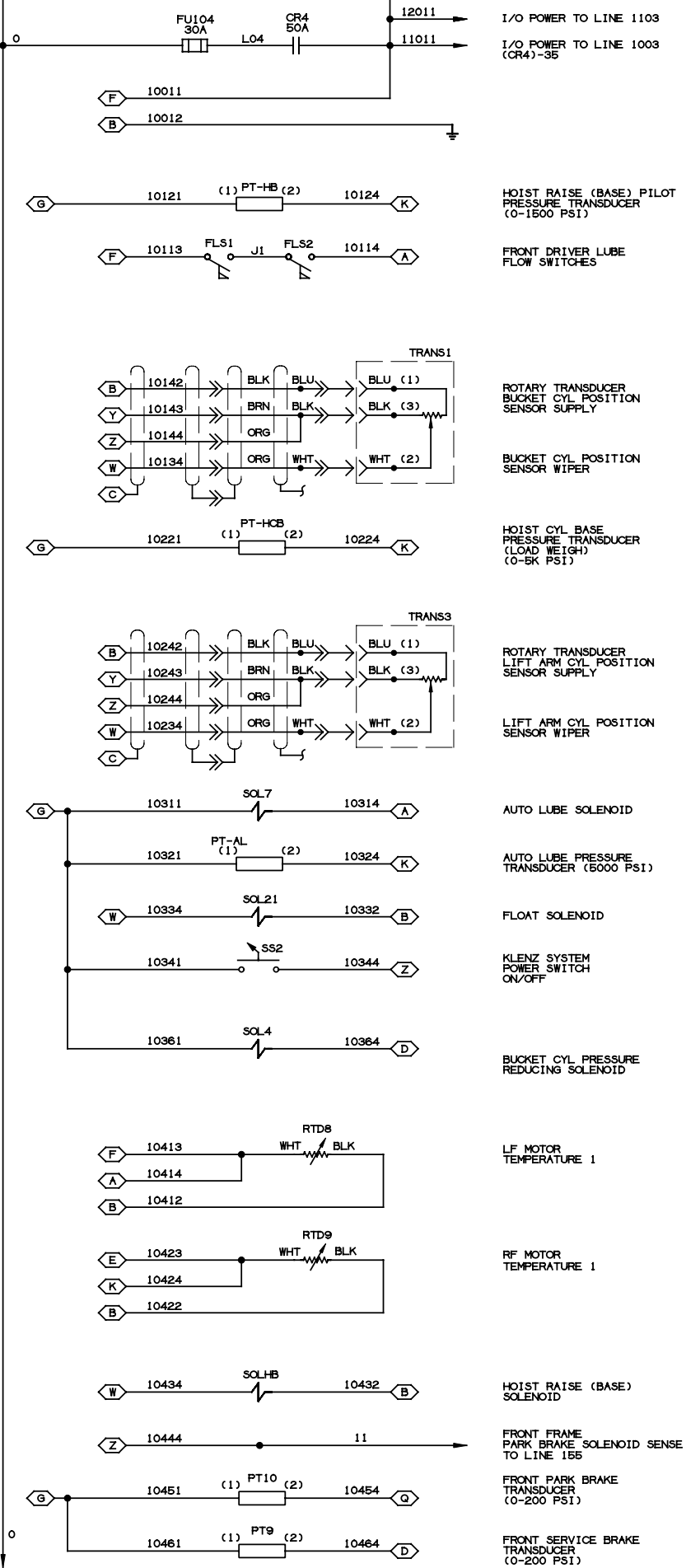
REVOLUTIONS		ECN	DATE	CHK	APP
00	RELEASE	NL05-0997	11-21	FL	RWD WTM
01	NO CHANGE THIS SHEET	NL06-1301	3-9	FL	RWD WTM
02	UPDATE LEFT JOYSTICK - OCL-1 USE				
03	SAME HARNESS FOR DOZERS & LOADERS	NL06-1324	8-	FL	



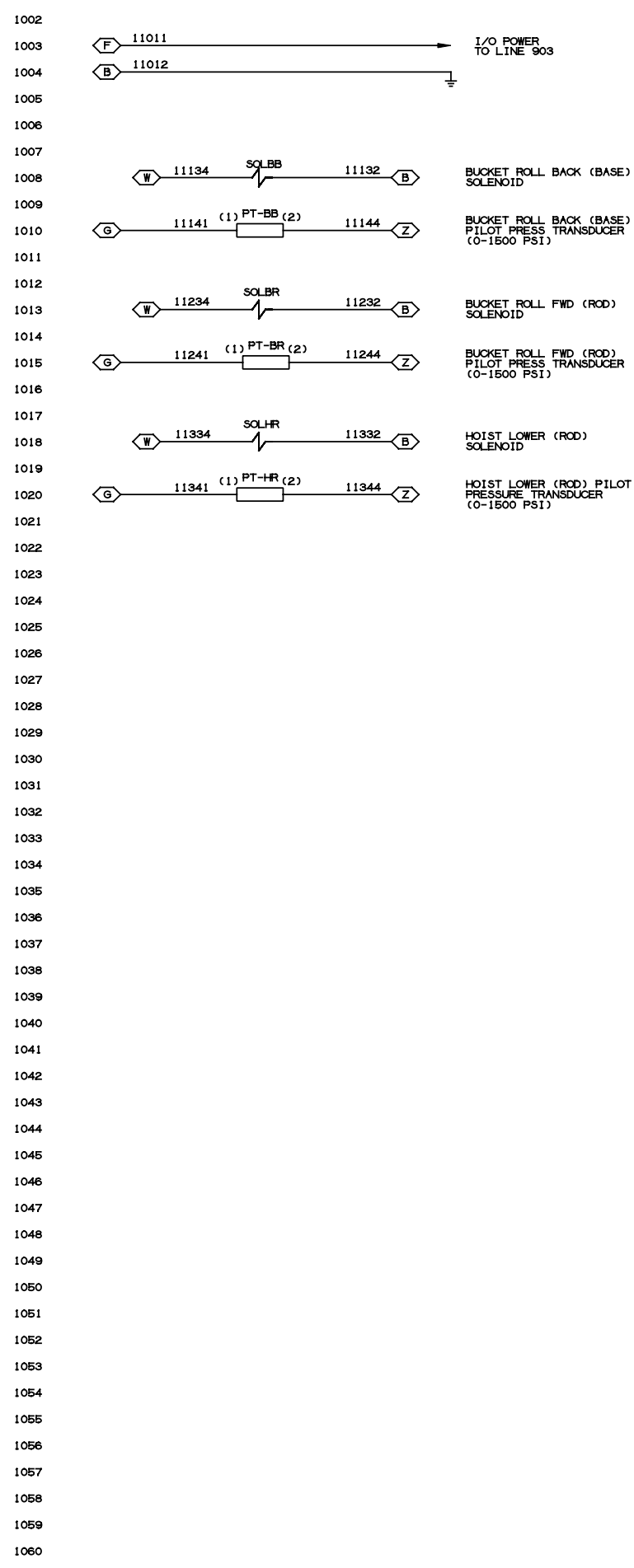
\* INDICATES OPTIONAL COMPONENTS  
 ( ) INDICATES CONNECTION PIN NUMBERS/LETTERS

REVISONS		ECN	DATE	CHK	APP
00	RELEASE	NL05-0997	11-21	FL	RWD WTM
02	UPDATE HYDR OIL TEMP WIRING	NL06-1301	3-9	FL	RWD WTM
02	NO CHANGE THIS SHEET	NL06-1324	8-	FL	RWD WTM

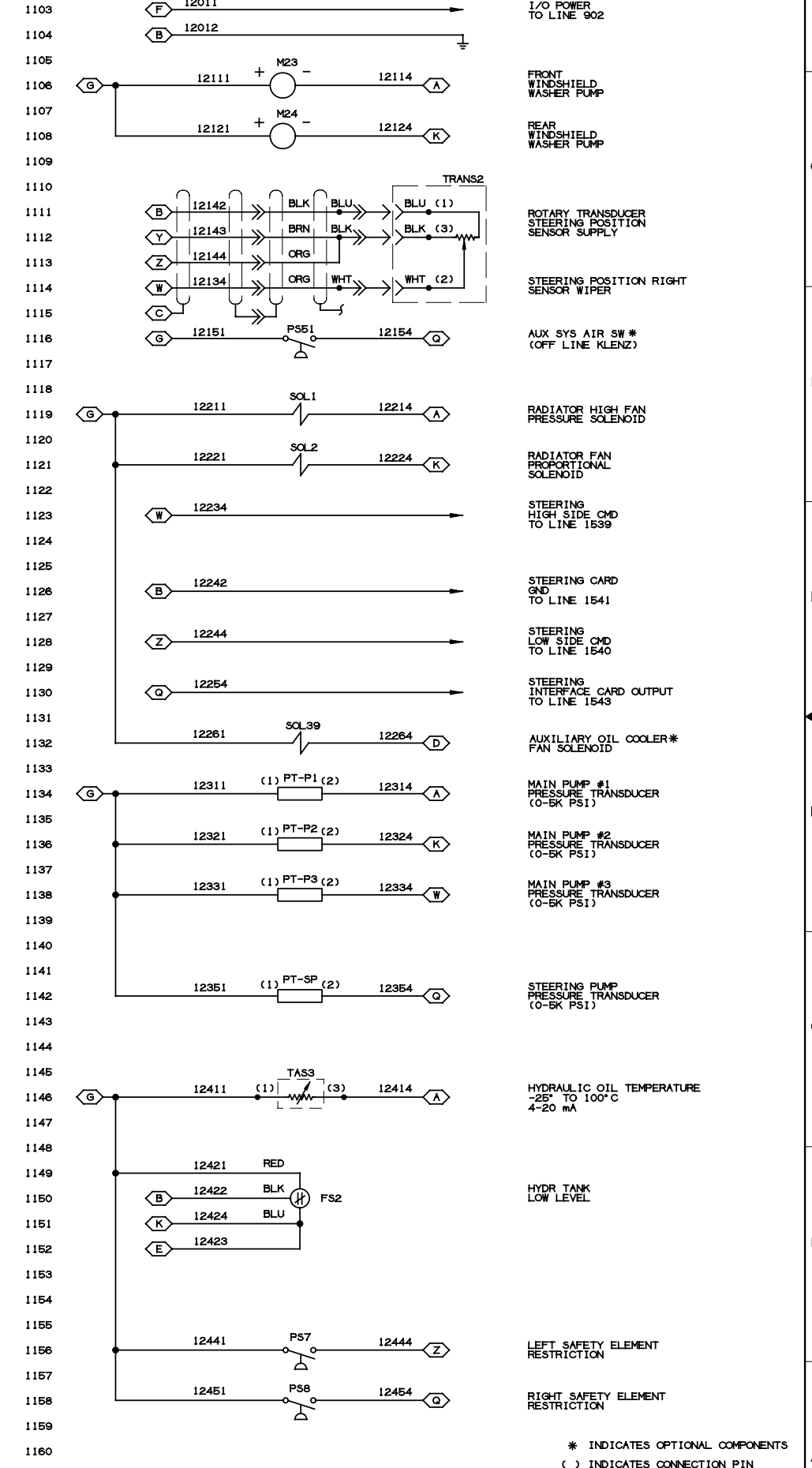
### FRONT FRAME MODULE #1 (REMOTE BOX 10)



### FRONT FRAME MODULE #2 (REMOTE BOX 11)



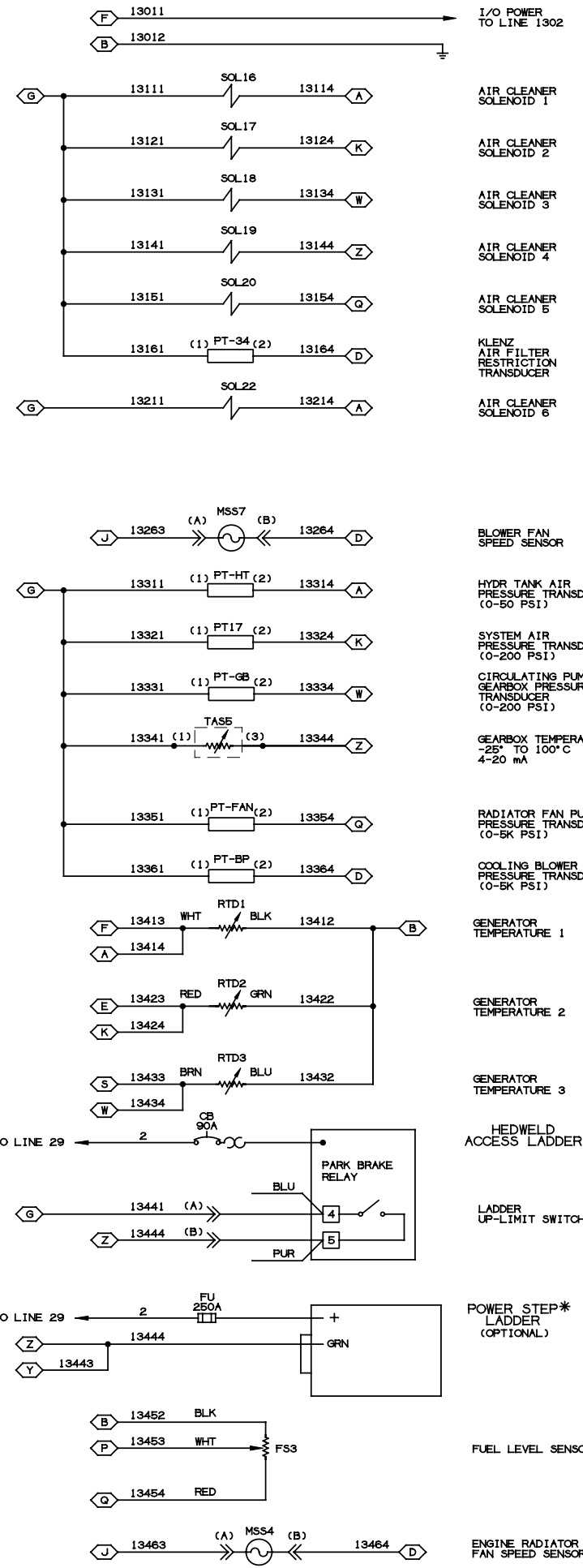
### REAR FRAME MODULE #1 (REMOTE BOX 12)



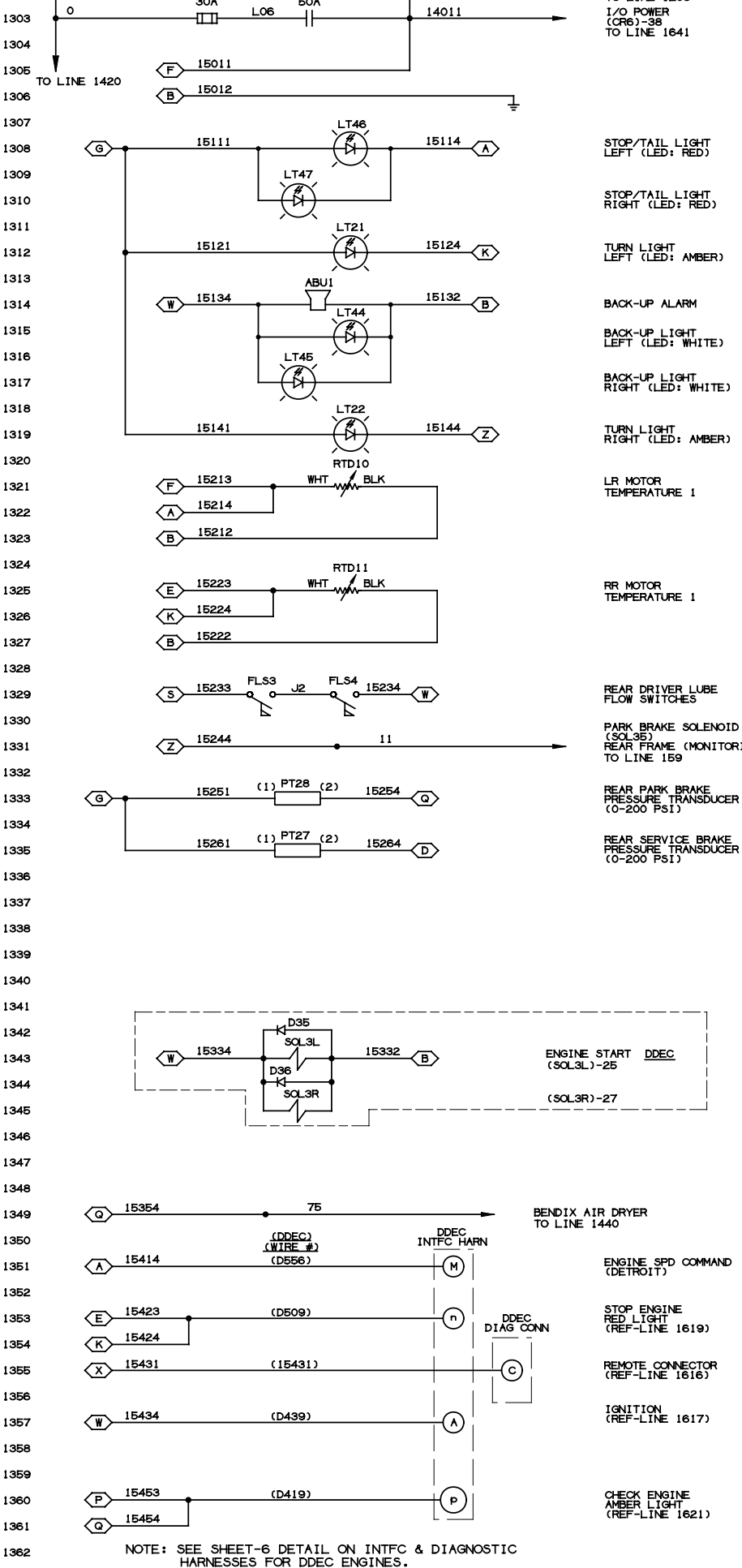
\* INDICATES OPTIONAL COMPONENTS  
( ) INDICATES CONNECTION PIN NUMBERS/LETTERS

REVOLUTIONS		ECN	DATE	CHK	APP
00	RELEASE	NL06-0997	11-21	FL	RWD WTM
01	AEROFINER HEATER INSTALLED ON MACHINE				
02	DELETE WABCO AIR DRYER, AIR TANKS & SOL				
04	DELETE CUM ENGINE START & INTFC HARNESS				
07	UPDATE GEARBOX TEMP WIRING	NL06-1301	3-9	FL	RWD WTM
B5	ADD AIR DRYER CONN 15354-ENG MDL-15				
B7	ADD PWR STEP AS OPTIONAL LADDER				
C1	CHG WABCO TO BENDIX AIR DRYER & ADD AIR				
F2	CHG TANK DRAIN VALVES; MOVE SOL15 TO SHT-1	NL06-1324	8-		

REAR FRAME MODULE #2  
(REMOTE BOX 13)

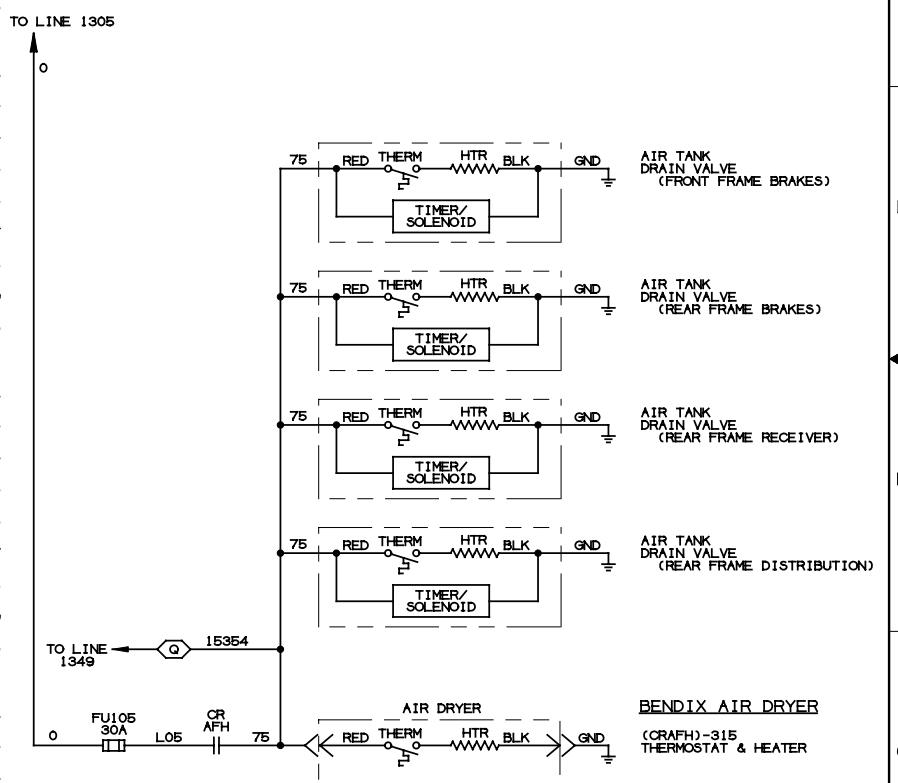
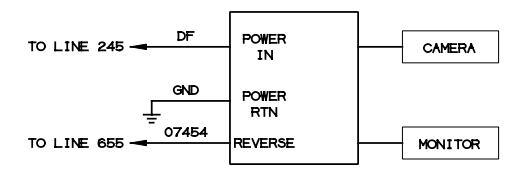


ENGINE  
(REMOTE BOX 15)



- 1400 ENGINE TRANSLATOR I/O POWER TO LINE 1203
- 1401 I/O POWER (CR6)-38 TO LINE 1641
- 1402 STOP/TAIL LIGHT LEFT (LED: RED)
- 1403 STOP/TAIL LIGHT RIGHT (LED: RED)
- 1404 TURN LIGHT LEFT (LED: AMBER)
- 1405 BACK-UP ALARM
- 1406 BACK-UP LIGHT LEFT (LED: WHITE)
- 1407 BACK-UP LIGHT RIGHT (LED: WHITE)
- 1408 TURN LIGHT RIGHT (LED: AMBER)
- 1409 LR MOTOR TEMPERATURE 1
- 1410 RR MOTOR TEMPERATURE 1
- 1411 REAR DRIVER LUBE FLOW SWITCHES
- 1412 PARK BRAKE SOLENOID (SOL3S)
- 1413 REAR FRAME (MONITORING) TO LINE 159
- 1414 REAR PARK BRAKE PRESSURE TRANSDUCER (0-200 PSI)
- 1415 REAR SERVICE BRAKE PRESSURE TRANSDUCER (0-200 PSI)
- 1416 ENGINE START (SOL3L)-25
- 1417 (SOL3R)-27
- 1418 BENDIX AIR DRYER TO LINE 1440
- 1419 ENGINE SPD COMMAND (DETROIT)
- 1420 STOP ENGINE RED LIGHT (REF-LINE 1619)
- 1421 REMOTE CONNECTOR (REF-LINE 1616)
- 1422 IGNITION (REF-LINE 1617)
- 1423 CHECK ENGINE AMBER LIGHT (REF-LINE 1621)

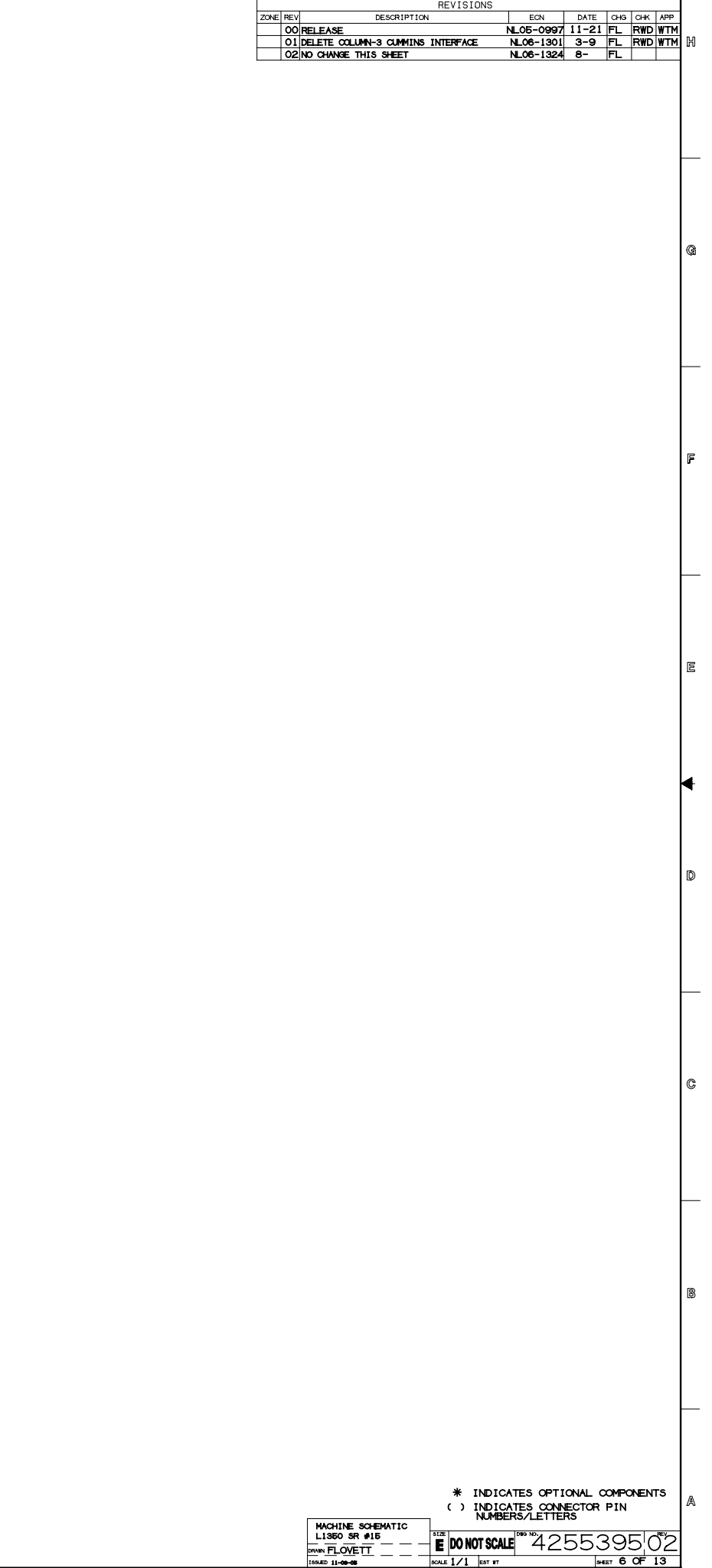
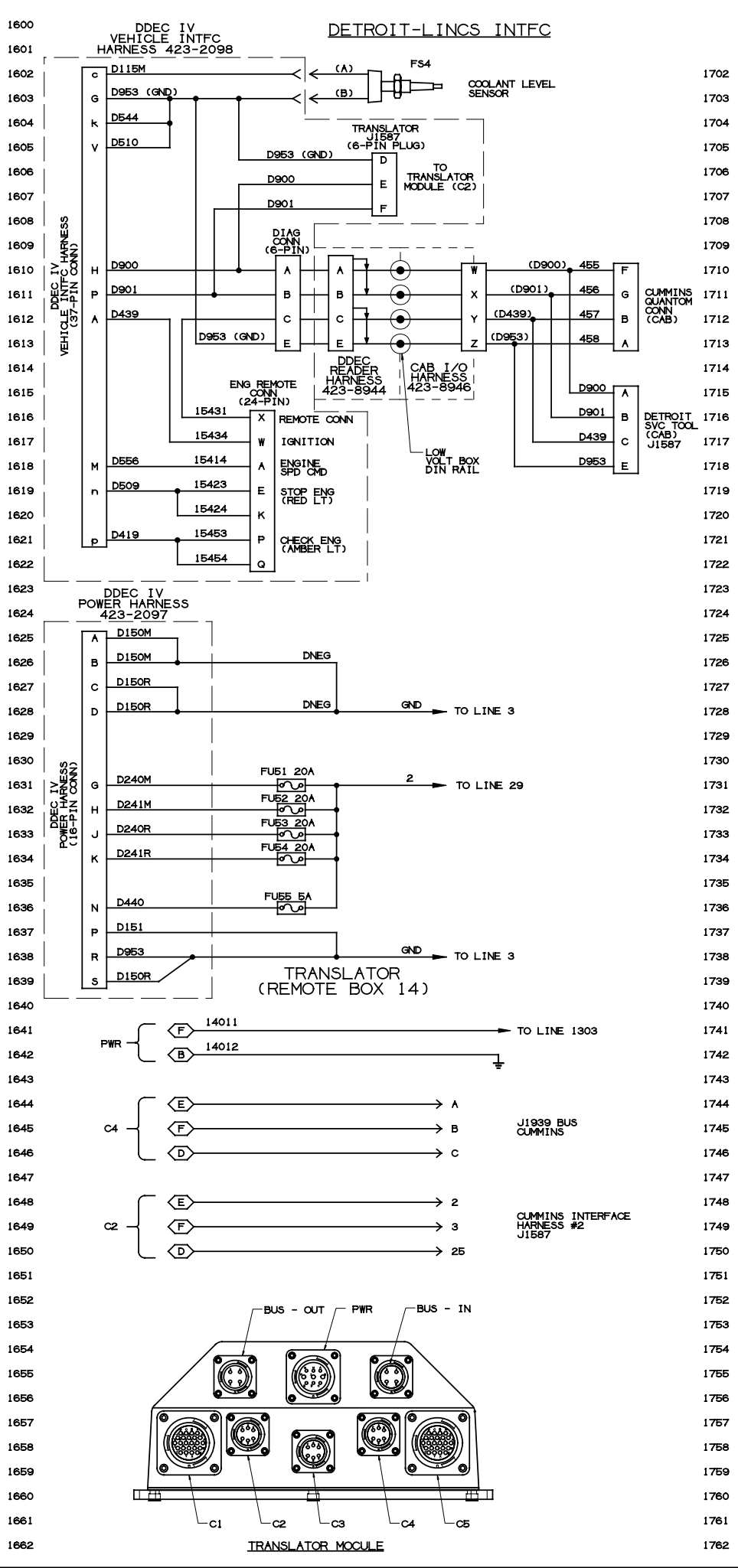
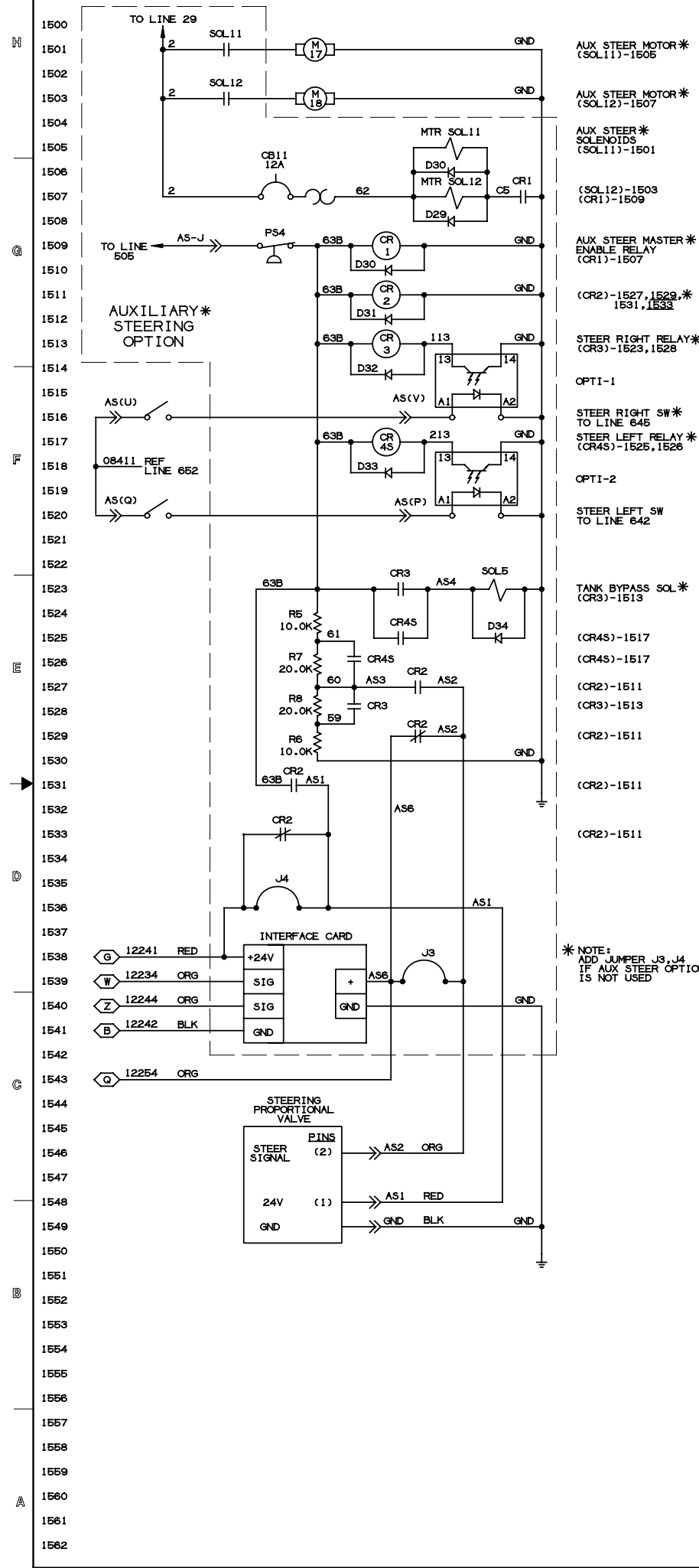
REAR VISION CAMERA \* SYSTEM



NOTE: SEE SHEET-6 DETAIL ON INTFC & DIAGNOSTIC HARNESSES FOR DDEC ENGINES.

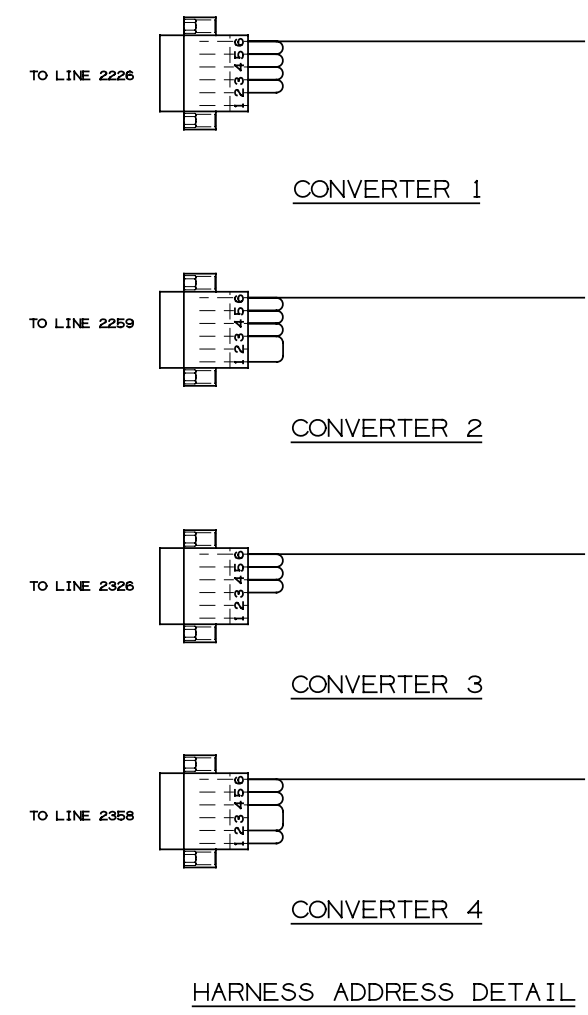
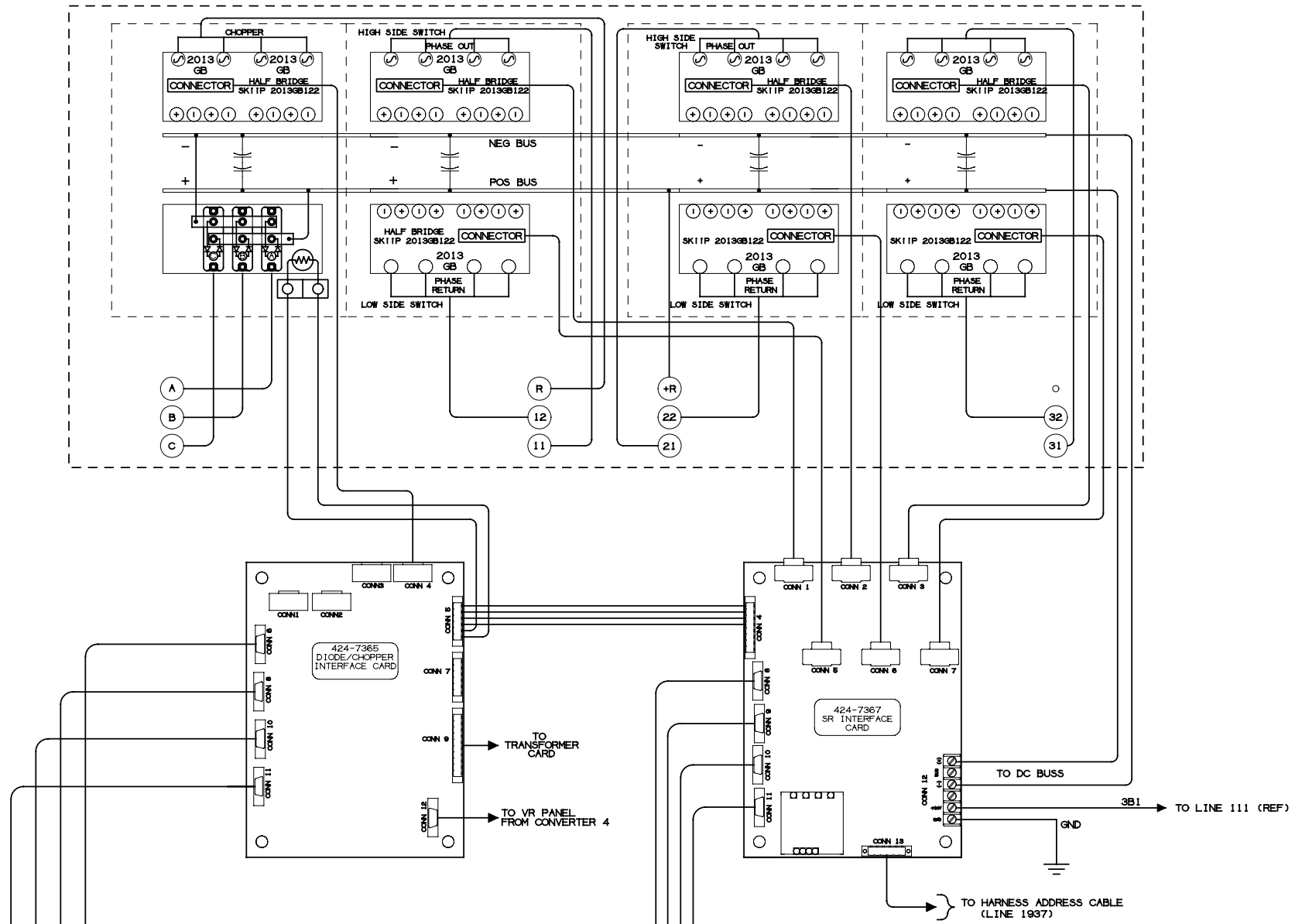
\* INDICATES OPTIONAL COMPONENTS

REVISIONS		ECN	DATE	CHK	APP
00	RELEASE	NL06-0997	11-21	FL	RWD WTM
01	DELETE COLUMN-3 CUMMINS INTERFACE	NL06-1301	3-9	FL	RWD WTM
02	NO CHANGE THIS SHEET	NL06-1324	8-	FL	

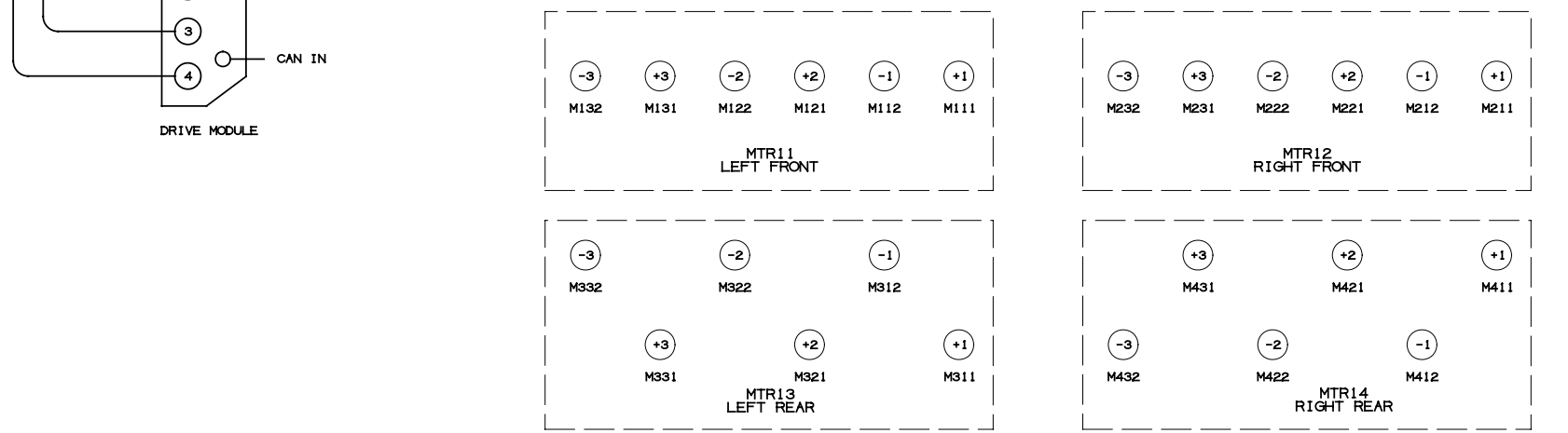


REVISIONS		ECN	DATE	CHK	APP
00	RELEASE	NL06-0997	11-21	FL	RWD WTM
01	NO CHANGE THIS SHEET	NL06-1301	3-9	FL	RWD WTM
02	NO CHANGE THIS SHEET	NL06-1324	8-	FL	RWD WTM

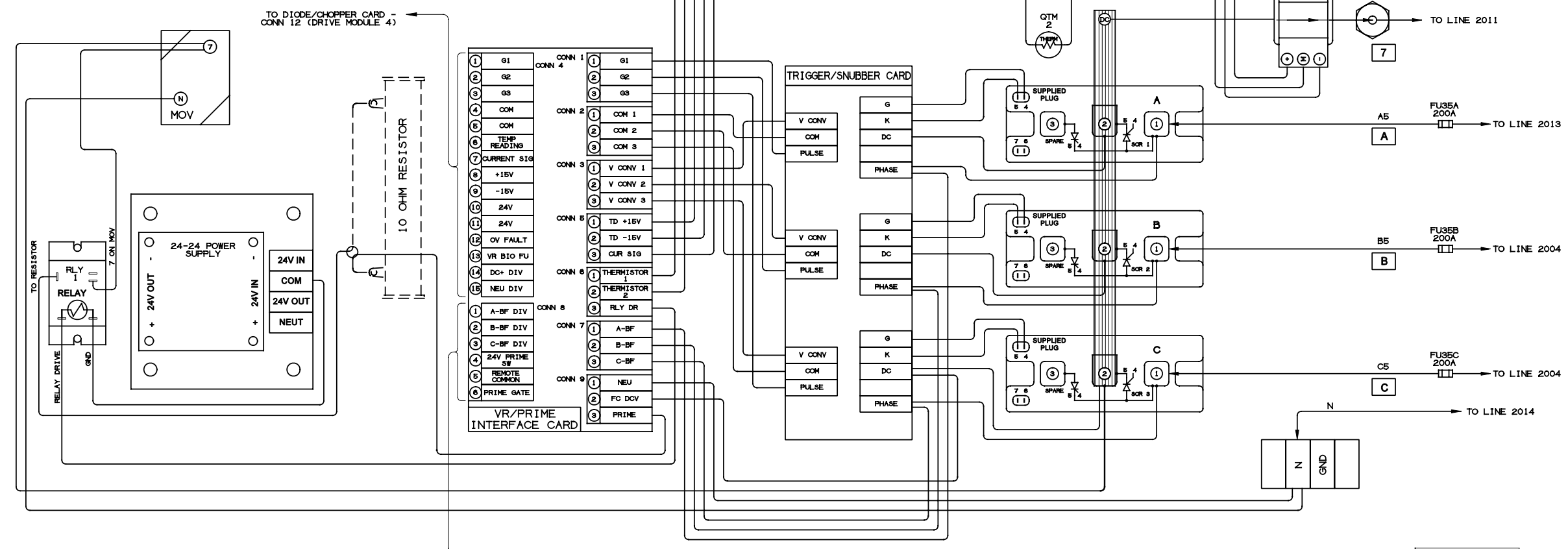
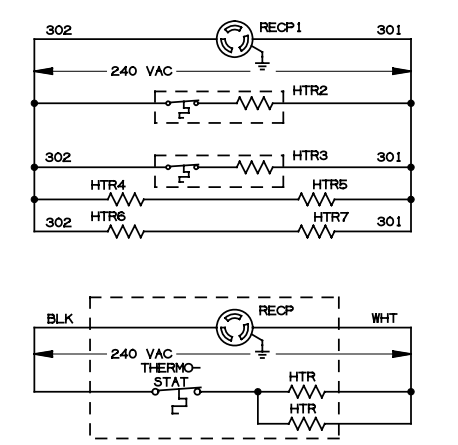
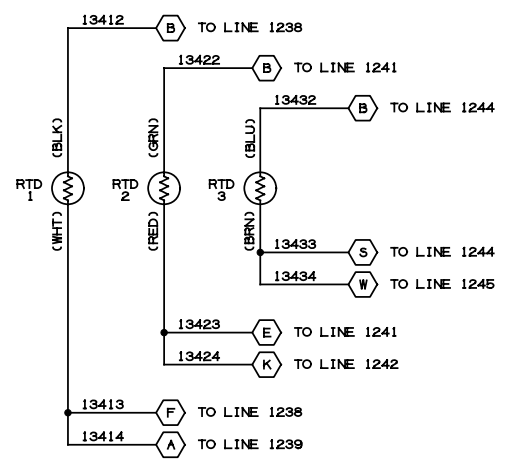
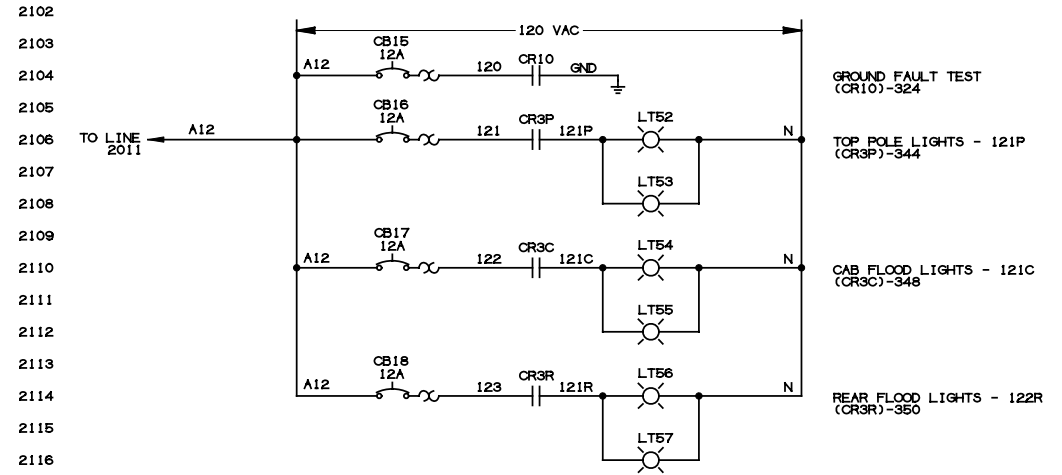
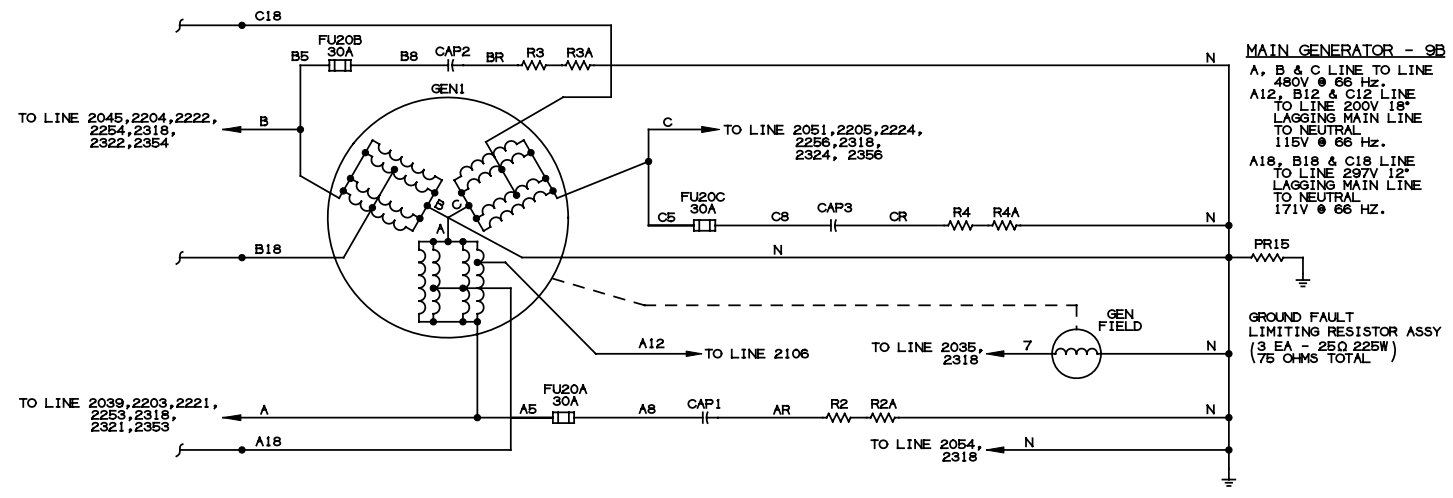
**SR CONVERTER WIRING LAYOUT**  
REFERENCE INFORMATION  
(EXAMPLE 1 OF 4 IGBT PACKAGES)



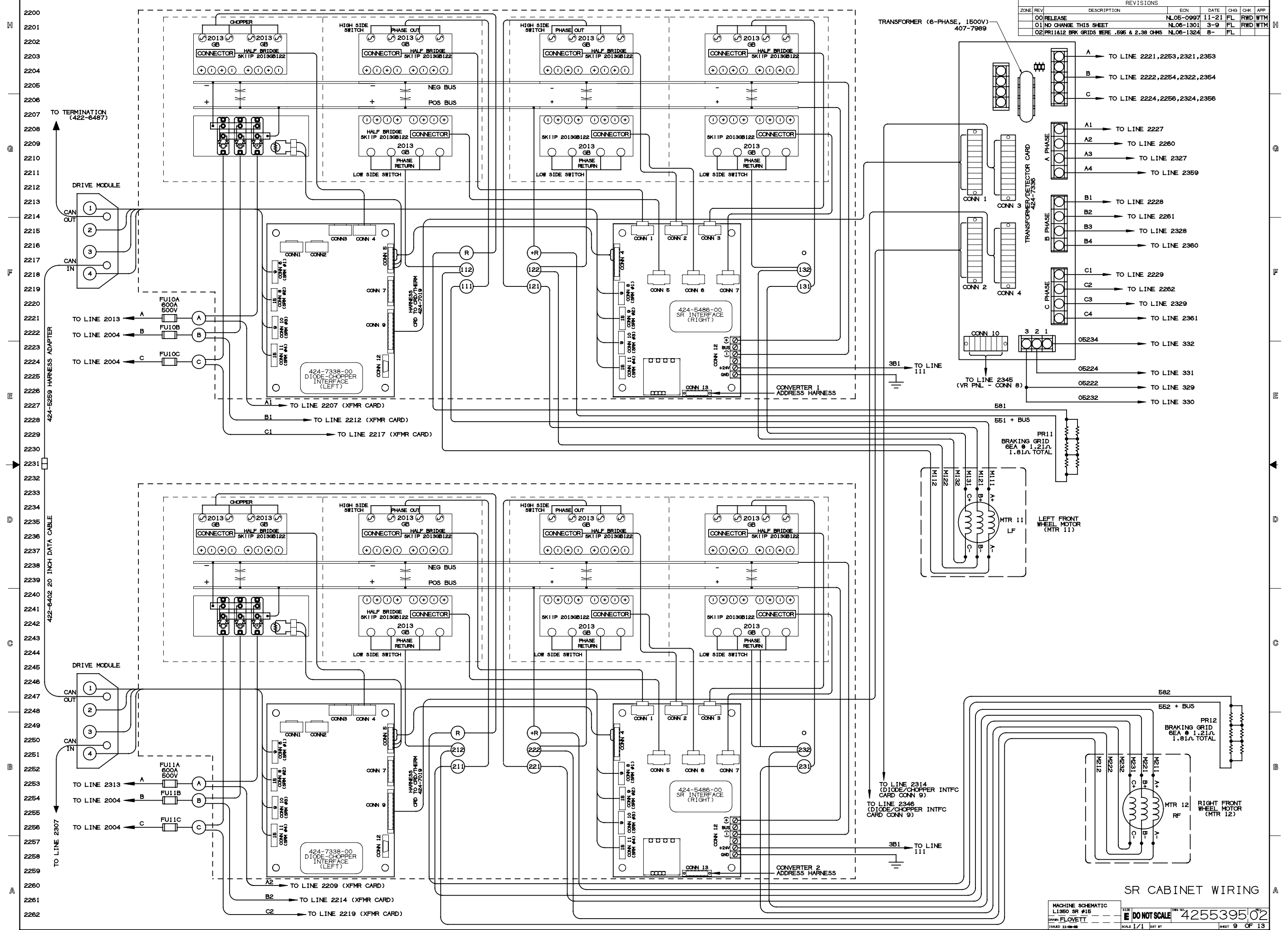
**WHEEL MOTOR WIRING LAYOUT**  
(SHOWN AS POSITIONED IN AXLES)



REVOLUTIONS		ECN	DATE	CHK	APP
00	RELEASE	NL06-0997	11-21	FL	RWD WTM
01	NO CHANGE THIS SHEET	NL06-1301	3-9	FL	RWD WTM
H4	UPDATE MAIN GENERATOR (9B) LINE DATA	NL06-1324	8-	FL	



REVISIONS		ECN	DATE	CHK	APP
00	RELEASE	NL05-0997	11-21	FL	RWD WTM
01	NO CHANGE THIS SHEET	NL06-1301	3-9	FL	RWD WTM
02	PR11&12 BRK GRIDS WERE .695 & 2.38 OHMS	NL06-1324	8-	FL	



MACHINE SCHEMATIC  
 L1350 SR #15  
 DRAWN FLOVETT  
 ISSUED 11-08-08

SCALE 1/1

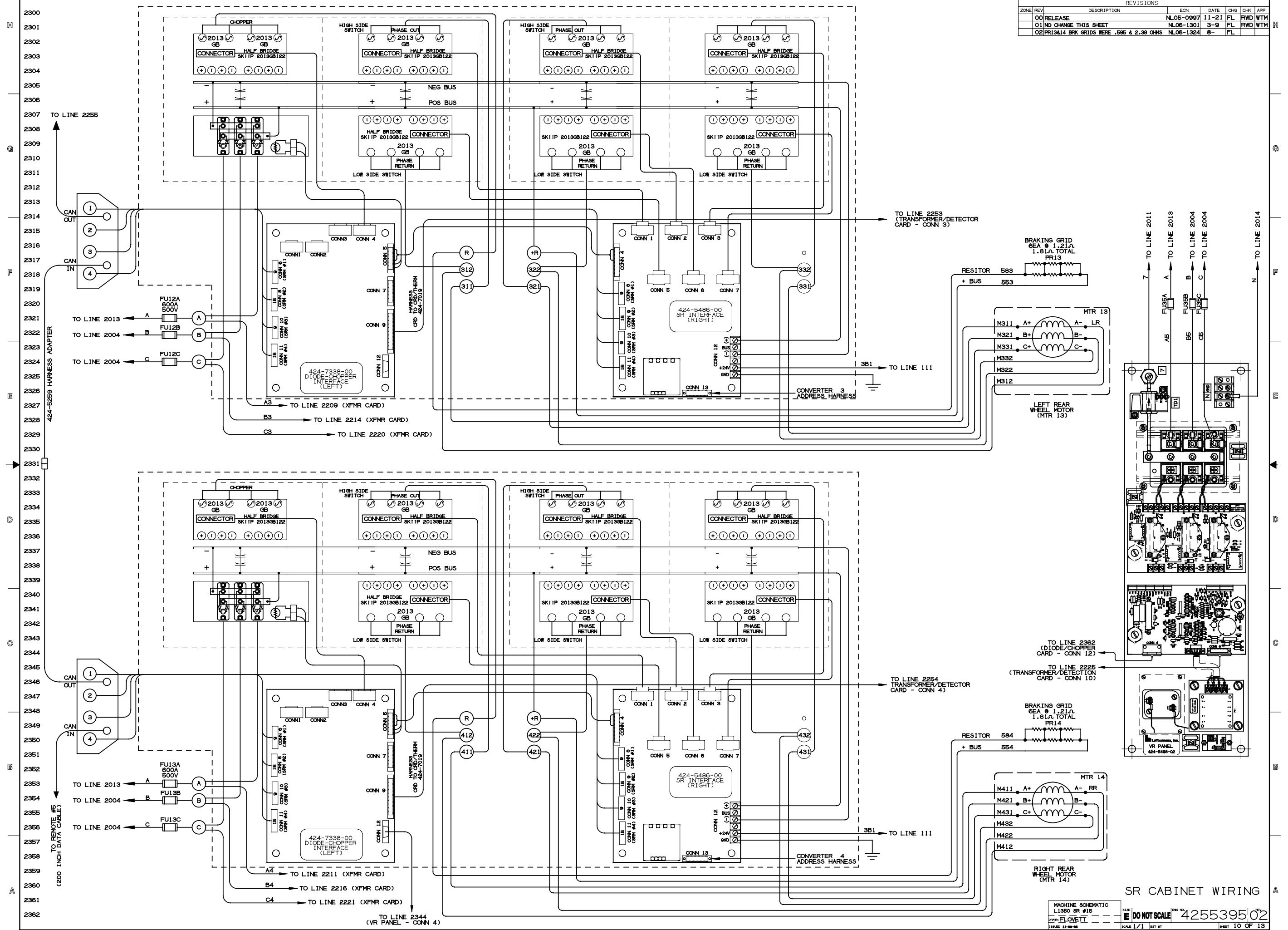
DO NOT SCALE

4255395/02

SHEET 9 OF 13

SR CABINET WIRING

REVOLUTIONS		ECN	DATE	CHK	APP
00	RELEASE	NL06-0997	11-21	FL	RWD WTM
01	NO CHANGE THIS SHEET	NL06-1301	3-9	FL	RWD WTM
02	PR13414 BRK GRIDS WERE .585 & 2.38 OHMS	NL06-1324	8-	FL	



SR CABINET WIRING

MACHINE SCHEMATIC  
L1360 SR #15  
DRAWN FLOVETT  
ISSUED 11-08-08

SCALE 1/1  
SHEET 10 OF 13

DO NOT SCALE  
4255395/02

ZONE	REV	DESCRIPTION	ECN	DATE	CHK	APP
00	RELEASE		NL05-0997	11-21	FL	RWD WTM
01	ADD TURCK WIRE/COLOR CODE CHART (COL-1)	NL06-1301		3-9	FL	RWD WTM
02	UPDATE CABLE P/N LEGEND-ADD 300*430* GAN	NL06-1324		8-	FL	RWD WTM

### ADDRESS CHART

ADDRESS	SOLDER TO PIN I	SOLDER TOGETHER
01	H G C D E A	
02	A	G C D E H
03		G C D E A H
04	A H	C D E A G
05	H	C D E A G
06	A	C D E H G
07		C D E A H G
08	A H G	D E C
09	H G	D E A C
10	A	G D E H C
11		G D E A H C
12	A H	D E G C
13	H	D E A G C
14	A	D E H G C
15		D E A H G C
16	A H G C	E A D
17	H G C	E A D

**NOTE:**  
THE ADDRESS IS DETERMINED BY ADDING THE VALUES OF THE ADDRESS PINS THAT ARE NOT SOLDERED TO PIN I (REFER TO ADDRESS CHART).  
EXAMPLE: PINS A & D NOT SOLDERED TO PIN I WOULD GIVE AN ADDRESS OF 17 (1 + 16 = 17)

### POWER CONNECTOR PIN ADDRESS & VALUE CHART

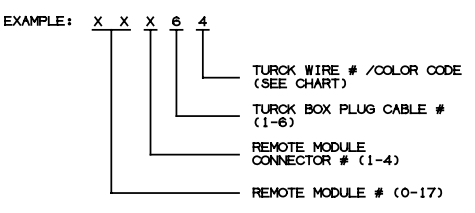
PIN	FUNCTION / VALUE
A	ADDRESS 1 / VALUE = 1
B	GND /
C	ADDRESS 4 / VALUE = 8
D	ADDRESS 5 / VALUE = 16
E	ADDRESS 6 / VALUE = 32
F	+24V /
G	ADDRESS 3 / VALUE = 4
H	ADDRESS 2 / VALUE = 2
I	ADDRESS COM /

### TURCK WIRE #/COLOR CODE CHART

WIRE #	4/C W/SHLD	INDICATES
1	RED	24V
2	BLACK	GROUND
3	BROWN	15V
4	ORANGE	SIGNAL

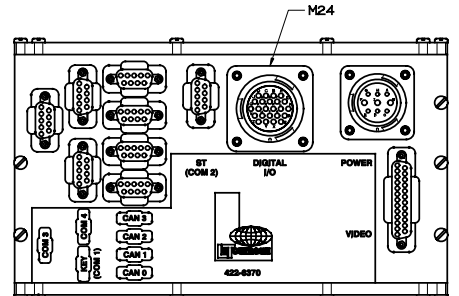
### MACHINE WIRE # LEGEND

(SEE CHART - REMOTE MODULE)



### CABLE DESCRIPTIONS & P/N'S

TURCK BOX 10M	425-1684
TURCK BOX 5M	424-5972
TURCK BOX 2M	425-1683
EURO-DIN 5M (LOW SIDE) (BLACK CONNECTOR)	424-5971
EURO-DIN .9M (LOW SIDE) (YELLOW CONNECTOR)	425-1682
EURO-DIN .9M (HI-SIDE) (GREY CONNECTOR)	425-3977
EURO-EURO 2M (5-PIN CONNECTORS)	425-1781
EURO-EURO 10M (5-PIN CONNECTORS)	425-1687
EURO-SHLD OPEN 6M (M12 5-PIN MALE CONNECTOR)	424-5973
EURO-MALE BLURKHEAD (5-PIN)	425-1685
EURO-FEMALE BLURKHEAD (5-PIN)	425-1686
CAN BUS CABLE 400*	425-0884
CAN BUS CABLE 300*	425-8835
CAN BUS CABLE 200*	425-0882
CAN BUS CABLE 80*	425-0883
CAN BUS CABLE 30*	425-5843
LED PLUG 8 INCH LEADS	424-5977
TERMINATING RESISTOR (DATA CABLE TERMINATOR)	422-6487
I/O CABLE (NON-TURCK)	423-2170
RH JOYSTICK CABLE (STRAIGHT BACK SHELL)	424-0209
RH JOYSTICK CABLE (WITH 90° BACK SHELL)	425-1666
LH JOYSTICK CABLE (WITH 90° BACK SHELL)	425-1669
LH JOYSTICK CABLE (WITHOUT 90° BACK SHELL)	425-4420
SERVICE TOOL CABLE (CAB TO LAPTOP)	424-3378
CUMMINS INTERFACE #1 (CAB TO LOW VOLTAGE BOX DIN BLOCK)	424-0189
CUMMINS INTERFACE #2 (CAB TO LOW VOLTAGE BOX DIN BLOCK)	424-0415
DDEC INTERFACE HARNESS (CAB I/O TO LOW VOLTAGE BOX DIN BLOCK)	423-2098
DDEC READER HARNESS (CAB I/O TO LOW VOLTAGE BOX DIN BLOCK)	423-8944



MASTER CONTROL BOX FRONT VIEW

MASTER (M24 CONNECTOR) CONNECTOR P/N WITH PINS: (423-2160)

### PIN REF DESTINATION

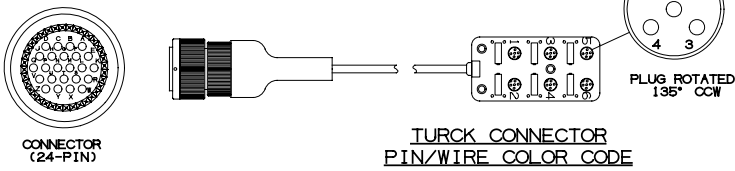
PIN #	CONNECTOR	PIN
A	KSW-A	14
B	KSW-A	13
C	KSW-A	12
D	KSW-A	11
E	KSW-A	10
F	KSW-A	9
G	KSW-A	8
H	KSW-A	7
J	CAB I/O	C
K	CAB I/O	D
L	BAT-B15	3
M	BAT-B15	4
N	BAT-B15	1
P	BAT-B9	H
R	BAT-B9	D
S		
T	BAT-9	G
U		
N		
D		
C		
J		
H		

### REMOTE MODULE INPUT/OUTPUT CONNECTIONS (6 INDIVIDUAL PLUGS)

MACHINE WIRE #	TURCK BOX PLUG CABLE #	PIN #	CONNECTOR PIN (24 PIN)	FUNCTION
XXX11	1	1	G	OUTPUT POWER (24V FUSED)
XXX12	1	2	B	POWER GROUND
XXX13	1	3	F	15V (WITH 1K OHM RESISTOR)
XXX14	1	4	A	NORMAL INPUT/OUTPUT
XXX21	2	1	M	OUTPUT POWER (24V FUSED)
XXX22	2	2	L	POWER GROUND
XXX23	2	3	E	15V (WITH 1K OHM RESISTOR)
XXX24	2	4	K	NORMAL INPUT/OUTPUT
XXX31	3	1	X	OUTPUT POWER (24V FUSED)
XXX32	3	2	R	POWER GROUND
XXX33	3	3	S	15V (WITH 1K OHM RESISTOR)
XXX34	3	4	W	INPUT/OUTPUT WITH SWITCH TO BATTERY
XXX41	4	1	T	OUTPUT POWER (24V FUSED)
XXX42	4	2	U	POWER GROUND
XXX43	4	3	Y	15V (WITH 1K OHM RESISTOR)
XXX44	4	4	Z	NORMAL INPUT/OUTPUT
XXX51	5	1	N	OUTPUT POWER (24V FUSED)
XXX52	5	2	V	POWER GROUND
XXX53	5	3	P	15V (WITH 1K OHM RESISTOR)
XXX54	5	4	Q	NORMAL INPUT/OUTPUT
XXX61	6	1	H	OUTPUT POWER (24V FUSED)
XXX62	6	2	C	POWER GROUND
XXX63	6	3	J	BALANCED FREQUENCY INPUT (SEE D)
XXX64	6	4	D	INPUT/OUTPUT WITH FREQUENCY

DETAIL SEE MACHINE WIRE # LEGEND

### ASSY HARNESS BREAKOUT BOX (TURCK)



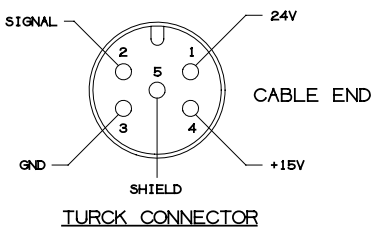
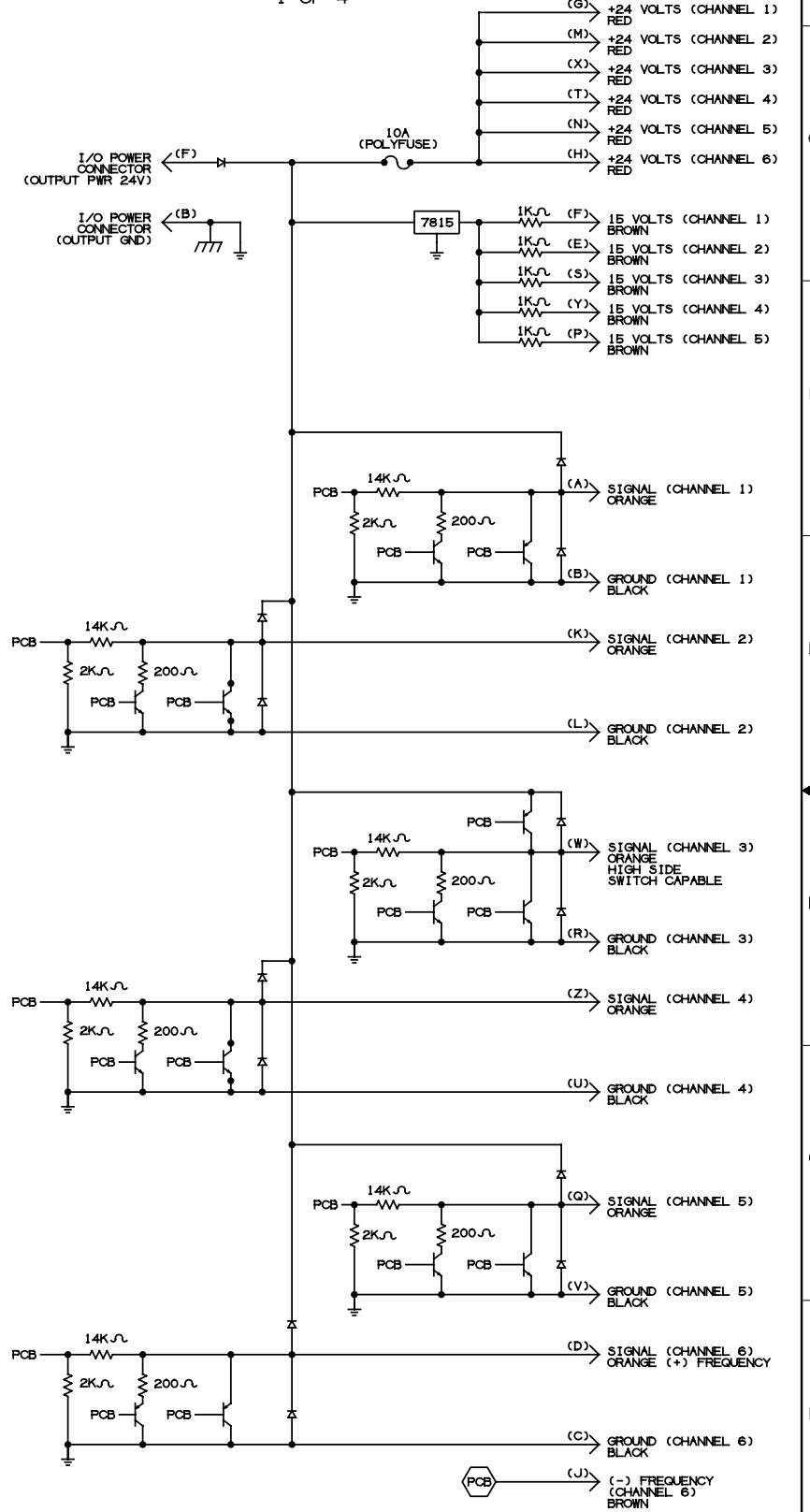
### TURCK CONNECTOR PIN/WIRE COLOR CODE

PIN	4/C W/SHLD	INDICATES
1	RED	24V
2	ORANGE	SIGNAL
3	BLACK	GROUND
4	BROWN	+15V

### TURCK BOX PLUG #

PLUG #1	PLUG #2	PLUG #3	PLUG #4	PLUG #5	PLUG #6	TURCK CONN PIN #
G	G	G	G	G	G	24VDC 1
A	K	W	Z	Q	D	SIGNAL 2
B	B	B	B	B	B	GND 3
F	E	S	Y	P	J	15VDC 4
C	C	C	C	C	C	SHIELD 5

### I/O CONNECTOR (EQUIVALENT CIRCUIT FOR REMOTE CONTROL MODULES) 1 OF 4



REFERENCE INFORMATION

REFERENCE INFORMATION

REFERENCE INFORMATION

ZONE	REV	DESCRIPTION	ECN	DATE	CHK	APP
	00	RELEASE	NL06-0997	11-21	FL	RWD WTM
	01	M554 P/N WAS 422-1349				
	01	TASS & TASE P/N WAS 422-1932	NL06-1301	3-9	FL	RWD WTM
	02	FLOW SWITCHES FL51-4 P/N WERE 411-7627				
	02	ADD AIR TANK DR VALVES, BENDIX AIR DRYER				
	02	ADD CBS FOR LTB01 LH JOYSTICK P/N WAS 425-4422				
	02	FR SW (R5W1) P/N WAS 425-6119	NL06-1324	8-	FL	

REFERENCE INFORMATION

DESIGNATOR	DESCRIPTION	PART NO.	MACH LOCAT	SCHEM LINE NO.
<b>TEMPERATURE ACTUATED SWITCHES</b>				
TAS3	HYDR TANK TEMP, TRANSDUCER -25° TO 100° C	425-6107	HYDT	1146
TAS5	GEAR BOX TEMP, TRANSDUCER -25° TO 100° C	425-6107	TU	1231
<b>THERMISTORS</b>				
RTM2	VR PANEL (THERMISTOR)	406-9589	LLBX	2036
RTD1,2,3	STATOR RTD 9B	422-1913	ENG	1238-1244, 2022
RTD8,9	TRACTION MOTORS	423-4505	FAXL	945,949
RTD10,11	TRACTION MOTORS	423-4505	RAXL	1321,1325
<b>TOGGLE SWITCHES</b>				
TGS1	ROCKER SWITCH, THROTTLE	423-5816	CIFPL	505-507
TGS2	ROCKER SWITCH, SHOP MODE	423-5815	CIFPL	513
TGS3	ROCKER SWITCH, BUCKET LEVEL	423-5804	CIFPL	515
TGS4	ROCKER SWITCH, BUCKET HEIGHT	423-5801	CIFPL	518
TGS5	ROCKER SWITCH, AUX PILOT PUMP	423-5812	CIFPL	521
TGS6	ROCKER SWITCH, GROUND FAULT TEST	423-5802	CIFPL	524
TGS7	ROCKER SWITCH, MANUAL LUBE	423-5814	CIFPL	527
TGS8*	ROCKER SWITCH, ETHER INJECT (NOT USED)	423-5813	CIFPL	530
TGS9	ROCKER SWITCH, WORK LIGHT (TRAVEL)	423-5805	CIFPL	410
TGS10	ROCKER SWITCH, BEACON	423-5807	CIFPL	416
TGS11	ROCKER SWITCH, PANEL DIMMER UP/DWN	423-5803	CIFPL	420
TGS12	ROCKER SWITCH, FLOODLIGHTS	423-5828	CIFPL	413
TGS13	ROCKER SWITCH, FRONT WIPER DELAY	423-5809	CIFPL	426
TGS14	ROCKER SWITCH, FRONT WIPER HI/LOW	423-5808	CIFPL	432
TGS15	ROCKER SWITCH, REAR WIPER HI/LOW	423-5810	CIFPL	437
TGS16	ROCKER SWITCH, WINDOW WASHER FRNT/REAR	423-5811	CIFPL	441
TGS22,23	TOGGLE SW, 2 POSITION, MAINTAINED	423-4956	LLBX	59
<b>TRANSDUCERS</b>				
TRANS1	ROTARY TRANSDUCER, BUCKET CYL POSITION	424-5713	FU	915
TRANS2	ROTARY TRANSDUCER, STEERING	424-5713	FU	1110
TRANS3	ROTARY TRANSDUCER, LIFT ARM POSITION	424-5713	FU	926
<b>VOLTAGE STABILIZER</b>				
VS	VOLTAGE STABILIZER	425-3740	LLBX	111,839
<b>VIDEO CAMERA KIT*</b>				
	CAMERA W/65 FT CABLE	424-3456	TU	1409
	MONITOR	424-3457	CAB	1412
	CONTROL BOX	424-3457	TU	1408

CODE	LOCATION
FSSB	FAN SPD SENSOR BOX
FSTB	FAN SPD TEST BOX
FU	FRONT UNIT
FUBX	FUSE BOX - TU
HDXB	HOOD J-BOX
HYDT	HYDRAULIC TANK
LLBX	SR ELECTRICAL CABINET
L.SJB	LIMIT SW J-BOX
MBAT	MASTER BATTERY BOX
PU	POWER UNIT
RAXL	REAR AXLE
RFLH	REAR FRAME LEFT HAND
RFRH	REAR FRAME RIGHT HAND
RFLB	REAR LIGHT J-BOX
TU	TOW UNIT

CODE	LOCATION
FSSB	FAN SPD SENSOR BOX
FSTB	FAN SPD TEST BOX
FU	FRONT UNIT
FUBX	FUSE BOX - TU
HDXB	HOOD J-BOX
HYDT	HYDRAULIC TANK
LLBX	SR ELECTRICAL CABINET
L.SJB	LIMIT SW J-BOX
MBAT	MASTER BATTERY BOX
PU	POWER UNIT
RAXL	REAR AXLE
RFLH	REAR FRAME LEFT HAND
RFRH	REAR FRAME RIGHT HAND
RFLB	REAR LIGHT J-BOX
TU	TOW UNIT

DESIGNATOR	DESCRIPTION	PART NO.	MACH LOCAT	SCHEM LINE NO.
<b>AIR CONDITIONER &amp; HEATER (MINE)</b>				
	AIR SEAT SUSPN POD, SEAT ASSY:425-6122	424-8648	CAB	536
	AIR TANK DRAIN VALVE, 24VDC	425-5668	FU	108
	AIR TANK DRAIN VALVE, 24VDC	425-5668	TU	1425
	AIR TANK DRAIN VALVE, 24VDC	425-5668	TU	1429,1433, 1437
<b>AIR DRYER</b>				
	BENDIX AIR DRYER	425-8485	TU	1443
	HEATER 24VDC KIT: 425-8484			
	PURGE VALVE KIT: 425-8483			
	CHECK VALVE KIT: 425-8490			
	CARTRIDGE KIT: 425-8482			
<b>ALARMS</b>				
ABU1	BACK-UP ALARM 6-36V	405-6055	TU	1314
ALM1	ALARM, 24VDC INTERMITTENT,KEYSWITCH PNL	698-8248	CIFPL	135
ALM2	ALARM, 24VDC CONTINUOUS,KEYSWITCH PNL	409-4849	CIFPL	137
<b>ALTERNATOR</b>				
			PU	3
<b>BATTERIES</b>				
BATT1-4	12V, 1000V CCA STORAGE BATTERY WET	698-5709	BBLH	3,4
GEL CELL	BATTERY - 12 VOLT, 7.0 Ah	423-8709	CAB	206
<b>BATTERY DISCONNECT SWITCH</b>				
	BOX ASSY: 422-1765	425-5282	BDSW	3
<b>CAPACITORS</b>				
CAP1-3	CAPACITOR, 800V, 10 MFD	403-8075	LLBX	2013,2002, 2007
CAP4	CAPACITOR, 100 MFD, 25 WVDC	403-4827	CIFPL	717
<b>CIRCUIT BREAKERS (CAB)</b>				
CB1,2	CIRCUIT BREAKER, 12A 250V IP	423-0771	CAB	241,243, 214
<b>CIRCUIT BREAKERS (LLBX)</b>				
CB11	CIRCUIT BREAKER, 12A 250V IP DIN	423-0771	ASJB	1507
CB12	CIRCUIT BREAKER, 12A 250V IP DIN	423-0771	LLBX	47
CB13,14	CIRCUIT BREAKER, 12A 250V IP	423-0771	LLBX	102,104
CB15,16, 17,18	CIRCUIT BREAKER, 12A 250V IP DIN	423-0771	LLBX	2104,2106, 2110,2114
<b>CONTROL RELAYS (AUX STEER)*</b>				
CR1,2,*	24V COIL, DPDT 5A DIN	422-8641	ASJB	1509,1511, 1513,1517
CR1,2,*	24V COIL, DPDT 5A DIN	422-8641	ASJB	1509,1511, 1513,1517
OPTI-1,2*	OPTI-COUPLER	423-8989	ASJB	1314,1319
<b>CONTROL RELAYS (CAB)</b>				
CR-B1,B2	24V COIL, 1-NO/1-NC 20A	423-2167	CAB	224,227, 230,233
B3,B4				
CR-FWH	RELAY, SPDT 24VDC DUST PROOF	412-1404	CAB	244
CR-FWL	RELAY, SPDT 24VDC DUST PROOF	412-1404	CAB	246
CR-KSW	RELAY, SPDT 24VDC DUST PROOF	412-1404	CAB	251
CR-RW	RELAY, SPDT 24VDC DUST PROOF	412-1404	CAB	150
CR-PARK	RELAY, SPDT 24VDC DUST PROOF	412-1404	CAB	751
CR12				
<b>CONTROL RELAYS (LLBX)</b>				
CR4,6,9	24V COIL, 1-NO, 50A	411-9992	LLBX	35,38,30
CR10	RELAY, DPDT 24VDC 5A DIN	422-8641	LLBX	324
CR11	RELAY, SPDT 24VDC DUST PROOF	412-1404	LLBX	46
CR-AFH	24V COIL, 1-NO/1-NC 20A	412-1404	LLBX	315
CR3C,3P, 3R	24V COIL, SPDT 10A (405-4825)	423-2167	LLBX	348,344, 350
CR3M	RELAY, SPDT 24VDC DUST PROOF	412-1404	LLBX	346
CRM	24V COIL, 1-NO/1-NC 20A	412-1404	LLBX	32
CRW	24V COIL, 1-NO/1-NC 20A	412-1404	LLBX	41
RLY1	24V COIL, 2-NO	425-2881	LLBX	2047
<b>CONVERTERS</b>				
CONV1	24V TO 12V CONVERTER, 25A	417-1585	LLBX	101
CONV2	DC/DC CONVERTER 12V POWER SUPPLY	423-2416	CIFPL	733
CONV3	DC/DC CONVERTER 12V POWER SUPPLY	423-8706	MBAT	207
<b>FLOAT SWITCHES</b>				
F52	LOW LEVEL SWITCH (HYDR OIL)	411-7627	HYDT	1150
F53	FUEL LEVEL TRANSMITTER XM-800 SERIES	423-2086	TU	1257
F54	COOLANT LEVEL SENSOR (DDEC)	421-6128	ENG	1602
<b>FLOW SWITCHES</b>				
FLS1,2	LOW LEVEL SWITCH (HYDR OIL)	425-3949	FAXL	911,911
FLS3,4	LOW LEVEL SWITCH (HYDR OIL)	425-3949	RAXL	1329,1329
<b>FOOT SWITCHES</b>				
FTS1	ACCELERATOR PEDAL KIT: 425-5396	425-3373	CAB	759
FTS2	BRAKE BOOST SWITCH	405-8604	CAB	749
<b>FUSES</b>				
FU1,2,3,4	FUSE 10A, 32V	405-5645	MBAT	212,214, 220,222
FU6	FUSE TYPE g9 20A, 250VAC	423-5511	LLBX	NOT USED
FU7,8	FUSE 150A, 130VAC SEMICONDUCTOR	424-3400	BBLH	3,6
FU10A,10B, 10C	FUSE 600A, 500V SEMICONDUCTOR	405-5605	LLBX	2221-2224
FU11A,11B, 11C	FUSE 600A, 500V SEMICONDUCTOR	405-5605	LLBX	2253-2256
FU12A,12B, 12C	FUSE 600A, 500V SEMICONDUCTOR	405-5605	LLBX	2321-2324
FU13A,13B, 13C	FUSE 600A, 500V SEMICONDUCTOR	405-5605	LLBX	2353-2356
FU20A,20B, 20C	FUSE MIDGET 30A, 600V	424-7570	LLBX	2013,2003, 2007
FU5A,35B, 35C	FUSE 200A, 700V SEMICONDUCTOR	410-5309	LLBX	2039,2045, 2052,2320
FU51-54	FUSE 20A, 32V BLADE TYPE	421-6262	BBLH	1631-1634
FU55	FUSE 5A, 32V BLADE TYPE	421-6111	BBLH	1636
FU102	FUSE MIDGET 30 AMP 600V	424-7570	LLBX	241
FU103	FUSE MIDGET 30 AMP 600V	424-7570	LLBX	56
FU104	FUSE MIDGET 30 AMP 600V	424-7570	LLBX	903
FU105	FUSE MIDGET 30 AMP 600V	424-7570	LLBX	1443
FU106	FUSE MIDGET 30 AMP 600V	424-7570	LLBX	1303
FU109	FUSE MIDGET 30 AMP 600V	424-7570	LLBX	111
FU110	FUSE MIDGET 30 AMP 600V	424-7570	LLBX	556

DESIGNATOR	DESCRIPTION	PART NO.	MACH LOCAT	SCHEM LINE NO.
<b>GENERATOR</b>				
GEN1	GEN AC 9B FOOSUTB8 (DDEC)	424-0090	PU	2003
<b>HEATERS</b>				
HTR2,3*	MAIN HYD TANK HTRS, 4KW, REF:403-7184	403-8051	HYDT	2120,2122
HTR4-7*	BATTERY HEATERS, 75 WATT, REF:403-7180	403-8052	BBLH	2123-2124
<b>IBUTTON</b>				
	IBUTTON HEAD SPECIFIC TO LOADER #		CIFPL	825
<b>INTEC CARD (AUX STEER)</b>				
	AUX STEERING INTERFACE CARD	423-8993	ASJB	1542
<b>INSTRUMENT CLUSTER GAUGES</b>				
FLG	GAUGE, FUEL LEVEL	422-1925	CIFPL	728
TG	GAUGE, TEMPERATURE	421-2580	CIFPL	722
OPG	GAUGE, OIL PRESSURE	421-2582	CIFPL	724
APG	GAUGE, AIR PRESSURE	421-2583	CIFPL	726
SPD	GAUGE, SPEEDOMETER	414-6909	CIFPL	715
HRM	GAUGE, HOURMETER 10-80VDC	424-3266	CIFPL	730
<b>ENGINE COOL WEATHER (OPT)* KIT: 416-8134</b>				
	ENGINE COOLANT HEATER, 4000 WATTS	085-3460	PU	2129
	ENGINE OIL HEATER, 300 WATTS	095-0605	PU	2130
	KIM THERMOSTAT	417-1845	PU	2129
	RECEPTACLE - 240V, 20A		PU	2127
<b>KSW</b>				
	KEYSWITCH, 3 POS 24V CONTACT BLOCK - 1 N.O. CONTACT BLOCK - 1 N.C.	423-2229	CIFPL	140-146
		423-2243		
		423-2233		
<b>LIGHTER</b>				
CL1,2	CIGARETTE LIGHTER	410-0796	CAB	102,104
<b>LIGHTS</b>				
LT1,2	MIDDLE POLE LTS (LAMP: 424-5920)	423-5920	TU	56,57
LT3,4	LADDER LTS (LAMP: 414-6549)	414-9241	LLBX	58,59
LT5,6	AUTO CABINET LTS (LAMP: 414-6549)	414-9241	TU	61,62
LT13,14	FRONT TURN SIGNAL LTS, AMBER (LAMP: 28V 082-4615)	409-5055	CAB	340,342
LT21,22	REAR TURN SIGNAL LTS, LED-AMBER LEFT & RIGHT (LED PLUG: 424-5977)	425-3924	TU	1312,1319
LT40	FRONT FRAME WORK LT, 24V 70W	414-9241	FU	248
LT41	GEARBOX WORK LT ASSY, 24V 70W	414-9241	TU	250
LT42,43	WORK LAMP ASSY, 24V 70W (LAMP: 414-6549)	414-9241	TU	252,254
LT44,45	REAR BACK-UP LTS, LED-WHITE LEFT & RIGHT (LED PLUG: 424-5977)	424-5974	TU	1315,1317
LT46,47	REAR STOP/TAIL LTS, LED-RED LEFT & RIGHT (LED PLUG: 424-5977)	424-5975	TU	1308,1310
LT52,53	FLOOD LTS, QUARTZ (LAMP 500W 120V: 097-2222)	405-6608	TU	2106,2108
LT54,55	CAB FLOOD LTS, (LAMP 500W: 097-2222)	405-6608	CAB	2110,2112
LT56,57	REAR FLOOD LTS, (LAMP 500W: 097-2222)	405-6608	TU	2114,2116
LT60	CAB INTERIOR LT (LAMP 28V: 423-9041)	423-9040	CAB	216
BEACON*	DEALER INSTALLED OPTION		CAB	362
<b>LIGHTS - (KEYSWITCH PANEL)</b>				
LT7	LIGHT ASSY, SUPERBRIGHT BLUE LED	424-0172	CIFPL	131
LT8	LIGHT ASSY, SUPERBRIGHT RED LED	424-0170	CIFPL	133
LT9	LIGHT ASSY, SUPERBRIGHT AMBER LED	424-0171	CIFPL	132
LT10,11	LEDS LAMP AMBER W/CLEAR LENS	423-2417	CIFPL	142,144
LT12	LIGHT-UNIT LED (RED) 22.5 MM	423-2231	CIFPL	149
LT15	TRAVEL SWITCH LIGHT - LED	424-0144	CIFPL	411
LT16	FLOODLIGHTS SWITCH LIGHT - LED	424-0144	CIFPL	414
LT17	BEACON SWITCH LIGHT - LED	424-0144	CIFPL	417
LT18,19	PANEL DIMMER UP/DWN SWITCH LIGHT - LED	424-0144	CIFPL	422,423

WIRE NUMBER & LOCATION CODE

REVISIONS		ECN	DATE	CHK	APP
00	RELEASE	NL05-0997	11-21	FL	RWD WTM
01	UPDATE LINE NOS PER SCHEMATIC CHG	NL06-1301	3-9	FL	RWD WTM
02	UPDATE LINE NOS PER SCHEMATIC CHG	NL06-1324	8-	FL	

WIRE NO.	LINE
A	2013, 2203, 2221, 2253, 2319, 2321, 2353
A1	2208, 2227
A2	2209, 2260
A3	2210, 2327
A4	2211, 2359
A5	2013, 2039, 2322
A8	2013
A12	2011, 2104
A18	2014
AS1	1531, 1536, 1548
AS2	1527, 1546
AS4	1523
AS6	1529, 1539
AS-J	1509
AS-P	646
AS-V	649
ALT	3
AR	2013
B	2004, 2204, 2222, 2254, 2319, 2322, 2354
B1	2213, 2228
B2	2214, 2261
B3	2215, 2328
B4	2216, 2360
B5	2002, 2045, 2322
B8	2002
B18	2008
BR	2002
C	2004, 2206, 2224, 2256, 2319, 2324, 2356
C1	2218, 2229
C2	2219, 2262
C3	2220, 2329
C4	2221, 2361
C5	1507, 2007, 2051, 2322
C8	2007
C12VIP	102
C12V2P	104
C18	2001
C241P	111, 212, 835
C241R	211
C242A	241
C242P	241
C243J	556
C243P	556
C243R	557
CR	2007
DF	108, 253, 1409
DNEG	1626
D115M	1602
D150	1637
D150M	1626
D150R	1628, 1639
D240M	1631
D240R	1633
D241M	1632
D241R	1634
D419	1360, 1621
D439	1357, 1612
D440	1636
D509	1353, 1619
D510	1605
D544	1604
D556	1351, 1618
D900	1610
D901	1611
D953	1603, 1613, 1638
ES1	30, 33, 47, 334
ES2	33
ES4	40
ES5	44
ES6	49, 146
ES6A	146, 317
ES6B	148, 504
FWL	239
FWH	241
FWM	241
FW1	242
J1	911
J2	1329
J3	1539
J4	1536
L03	58
L04	903
L05	1443
L06	1303
L09	111, 835
M111	2232
M112	2232
M121	2232
M122	2232
M131	2232
M132	2232
M211	2250
M212	2250
M221	2250
M222	2250
M231	2250
M232	2250
M311	2321
M312	2325
M321	2322
M322	2324
M331	2323
M332	2323
M411	2353
M412	2356
M421	2353
M422	2356
M431	2354
M432	2355

WIRE NO.	LINE
N	2002, 2008, 2014, 2053, 2319
NEG	2
O	6, 102, 202, 542, 903, 1303, 1443
PB-H	153
POS	2
R1	30, 33
R2	35, 38
RLY1	2047
RWL	249
RWM	248
RW1	252
ST-(D)	247, 806
2	3, 29, 1246, 1253, 1501, 1631
3B1	111, 1835, 2224, 2257, 2324, 2356
4	20
4L	25
4R	27
EP	56
7	2011, 2034, 2319
11	153, 956, 1331
11A	153
11B	153
13	35, 47
36	545
59	1528
60	1527
63B	1509, 1523
61	1521
62	1507
75	1349, 1425, 1443
113	1513
120	2104
121	2106
121C	2110
121R	2114
121P	2108
122	2110
123	2114
125	59
125A	59
125B	59
126	248
127	252
173	61
174	62
213	1517
250R	354
301	2118
302	2118
455	1610
456	1611
457	1612
458	1613
501	130
502	134
503	136
504	133
505	132
506	131
507	117
508	116
509	115
510	114
511	128
512	125
513	122
514	119
515	147
551	2228
552	2248
553	2319
554	2351
581	2227
582	2247
583	2318
584	2350
606	102

REMOTE BOX 5 (LEFT LADDER BOX)

WIRE NO.	LINE
05011	303, 306, 310, 356, 901
05012	304
05111	315
05114	315
05124	148, 317
05141	319
05141A	319
05144	319
05151	322
05154	322
05161	324
05164	324
05211	327
05214	327
05224	329, 2225
05224	331, 2224
05232	330, 2226
05234	332, 2222
05244	334
05254	45, 336
05264	50, 338
05311	340
05314	340
05321	342
05324	342
05331	344
05341	346
05344	346
05351	348
05354	348
05361	350
05364	350
05411	352
05414	352
05424	354
05434	356
05444	50, 358
05454	41, 360
05461	362
05464	362

REMOTE BOX 6 (CAB MODULE #1)

WIRE NO.	LINE
06011	403
06012	404
06111	407
06112	409
06114	413
06124	410
06134	408
06144	421
06154	440
06164	442
06214	431
06224	433
06234	425
06244	427
06254	437
06264	416
06311	508
06312	532
06314	507
06324	513
06334	515
06344	419
06354	244, 446
06364	246, 448
06414	518
06424	521
06434	533
06444	527
06454	524
06464	34, 450

REMOTE BOX 7 (CAB MODULE #2)

WIRE NO.	LINE
07011	703
07012	704
07111	140, 741
07112	714
07114	139, 740
07124	151, 742
07134	149
07144	142, 743
07154	725
07164	721
07214	727
07224	723
07234	734
07244	730
07254	709
07264	711
07311	713
07314	720
07322	612
07323	613
07324	611
07332	614
07334	609
07342	618
07343	619
07344	617
07352	620
07354	616
07364	622
07412	606
07413	607
07414	605
07422	608
07424	604
07432	638
07433	636
07434	637
07442	640
07444	639
07454	654, 1412
07464	656

REMOTE BOX 8 (CAB MODULE #3)

WIRE NO.	LINE
08011	746
08012	747
08111	749
08114	749
08132	751
08134	751
08322	759
08323	759
08324	760
08334	760
08344	662
08354	647
08364	648
08411	650
08414	658
08424	624
08434	634
08441	622
08444	630
08454	626
08464	251, 762

REMOTE BOX 10 (FRONT FRAME MODULE #1)

WIRE NO.	LINE
10011	905
10012	906
10113	911
10114	911
10121	909
10124	909
10141	915
10142	916
10143	917
10144	918
10221	922
10224	922
10234	929
10242	926
10243	927
10244	928
10311	932
10314	932
10321	934
10324	934
10332	936
10334	936
10341	938
10344	938
10361	941
10364	941
10412	947
10413	945
10414	946
10422	951
10423	949
10424	950
10432	954
10434	954
10444	155, 956
10451	958
10454	958
10461	960
10464	960

REMOTE BOX 11 (FRONT FRAME MODULE #2)

WIRE NO.	LINE
11011	903, 1003
11012	1004
11132	1008
11134	1008
11141	1010
11144	1010
11232	1013
11234	1013
11241	1015
11244	1015
11332	1018
11334	1018
11341	1020
11344	1020

REMOTE BOX 12 (REAR FRAME MODULE #1)

WIRE NO.	LINE
12011	902, 1103
12012	1104
12111	1106
12114	1106
12121	1108
12124	1108
12141	1110
12142	1111
12143	1112
12144	1113
12151	1116
12154	1116
12211	1119
12214	1119
12221	1121
12224	1121
12234	1123, 1539
12241	1538
12242	1126, 1541
12244	1126, 1540
12254	1130, 1543
12261	1132
12264	1132
12311	1134
12314	1134
12321	1136
12324	1136
12331	1138
12334	1138
12351	1142
12354	1142
12411	1146
12414	1146
12421	1149
12422	1150
12423	1152
12424	1151
12441	1156
12444	1156
12451	1158
12454	1158

REMOTE BOX 13 (REAR FRAME MODULE #2)

WIRE NO.	LINE
13011	1203, 1302
13012	1204
13111	1206
13114	1206
13121	1208
13124	1208
13131	1210
13134	1210
13141	1212
13144	1212
13151	1214
13154	1214
13161	1216
13164	1216
13211	1218
13214	1218
13264	1223
13311	1225
13314	1225
13321	1227
13324	1227
13331	1229
13334	1229
13341	1231
13344	1231
13351	1234
13354	1234
13361	1236
13364	1236
13412	1238, 2017
13413	1238, 2029
13414	1239, 2030
13422	1241, 2018
13423	1241, 2026
13424	1242, 2027
13432	1244, 2019
13433	1244, 2024
13434	1245, 2025
13441	1249
13443	1255
13444	1250, 1254
13452	1257
13453	1258
13454	1260
13463	1262
13464	1262

REMOTE BOX 14 & 15 (ENGINE)

WIRE NO.	LINE
14011	1303, 1641
14012	1642
15011	